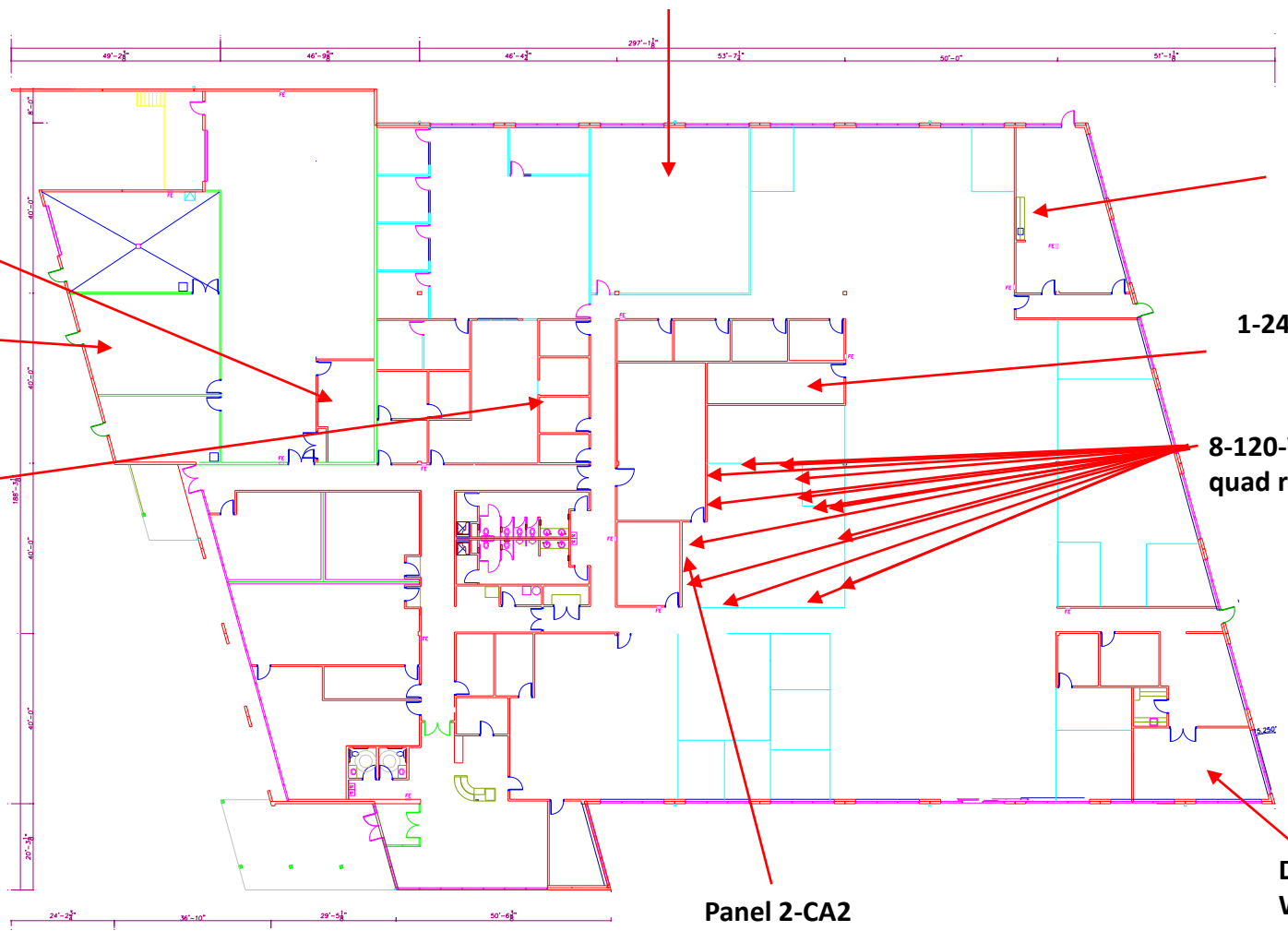


Remove 7 power poles, Pull power and data back to nearest junction box.



Panel 4-A  
18 blanks

Install 120-volt 30 amp circuit  
Install drain for ice head

7-120 volt 20 amp circuits

1-240 volt 25 amp circuit

Demo 12 feet of floor to ceiling wall including  
Power and data back to the nearest  
Junction box.

8-120-Volt-20 amp circuits divided. 14  
quad receptacles through out the space.

Panel 2-CA2  
12 blank spaces  
Panel 2-NA2  
9 blanks  
6 spares

Demo existing floor to ceiling  
Wall. Include demo of electrical  
and data to the nearest junction  
Box. Relocate HVAC control.