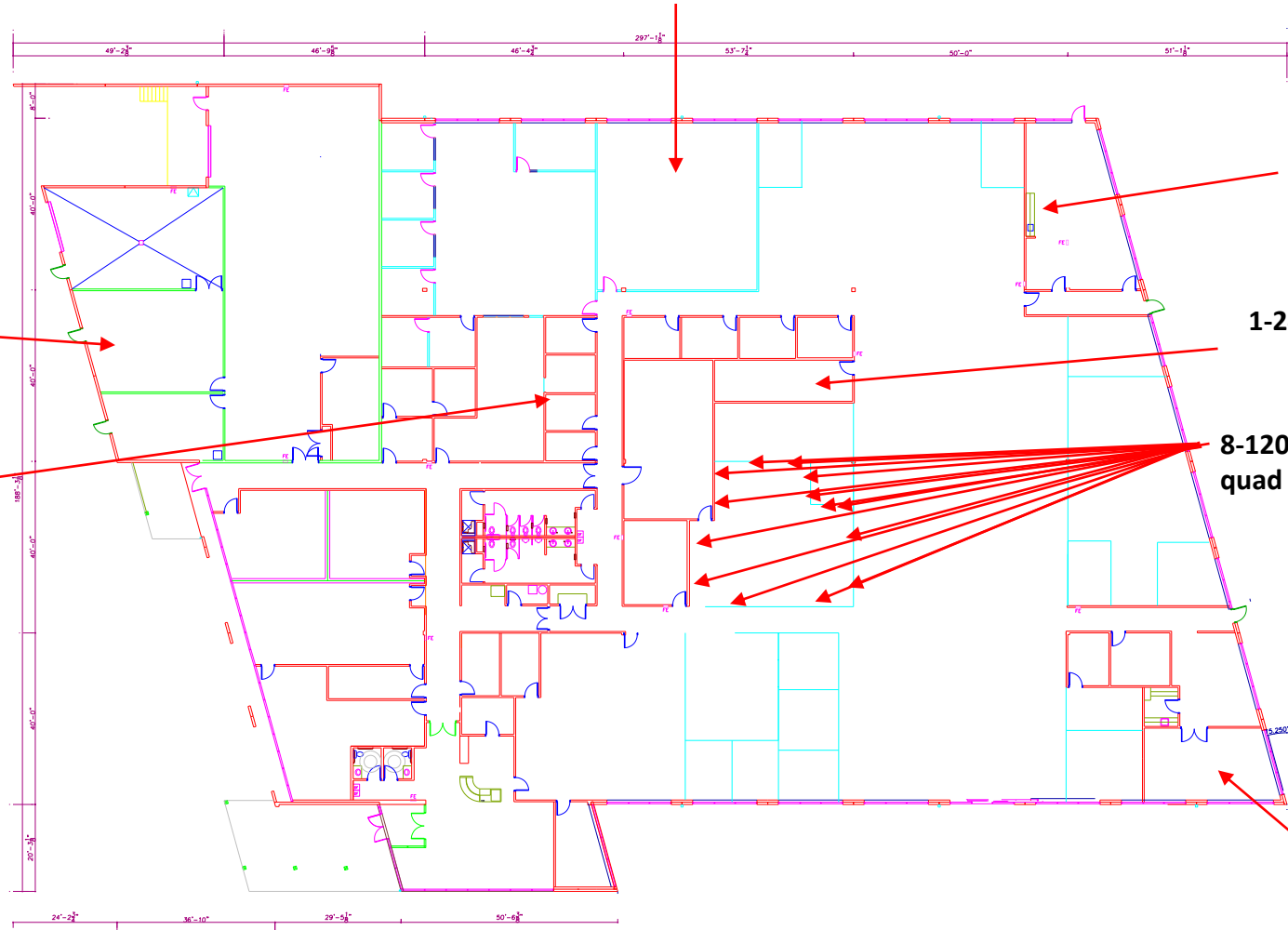


Remove 7 power poles, Pull power and data back to nearest junction box.



**Install 120-volt 30 amp circuit
Install drain for ice head**

1-240 volt 25 amp circuit

**8-120-Volt-20 amp circuits divided. 14
quad receptacles through out the space.**

7-120 volt 20 amp circuits

**Demo 12 feet of floor to ceiling wall including
Power and data back to the nearest
Junction box.**

**Demo existing floor to ceiling
Wall. Include demo of electrical
and data to the nearest junction
Box. Relocate HVAC control.**