

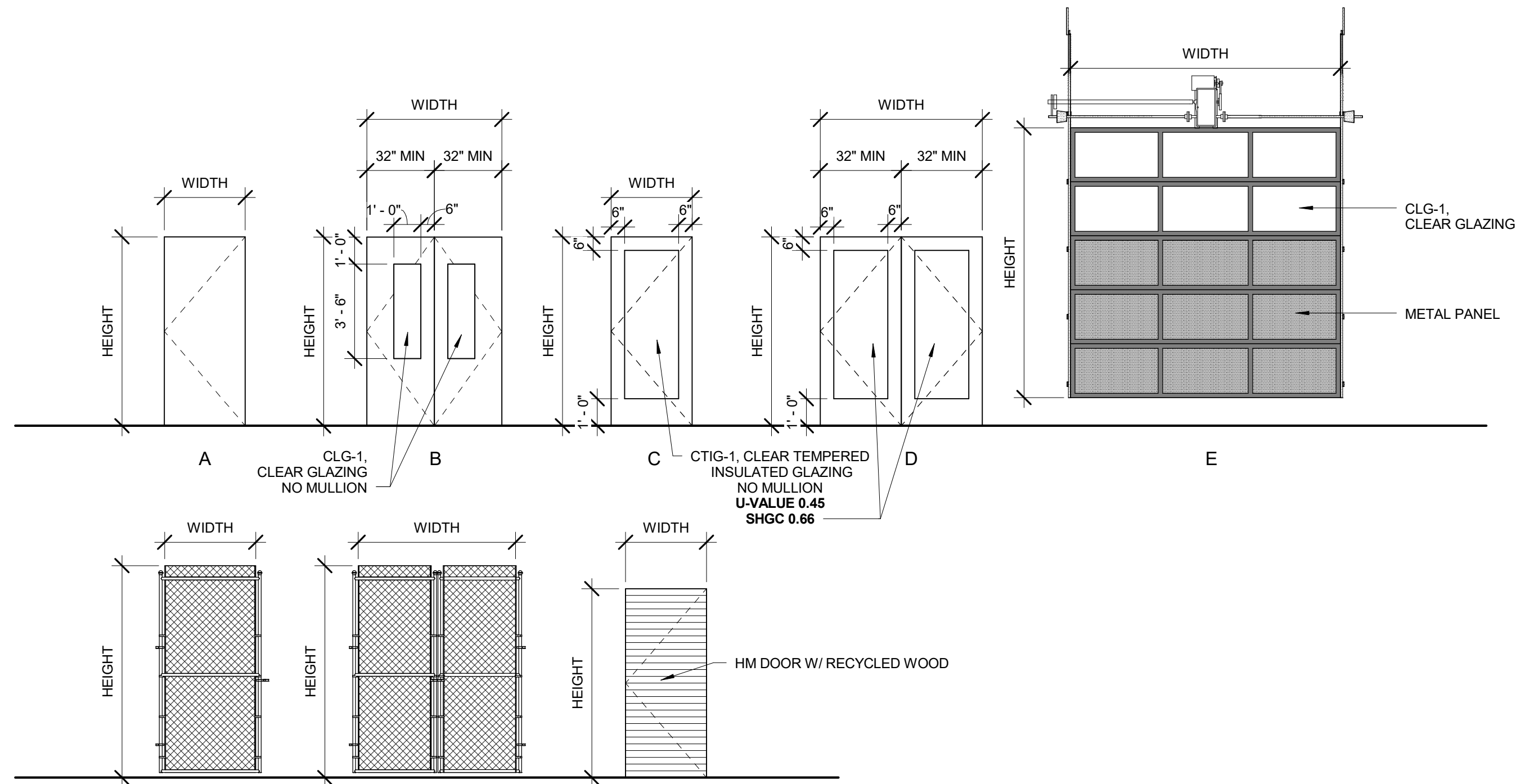
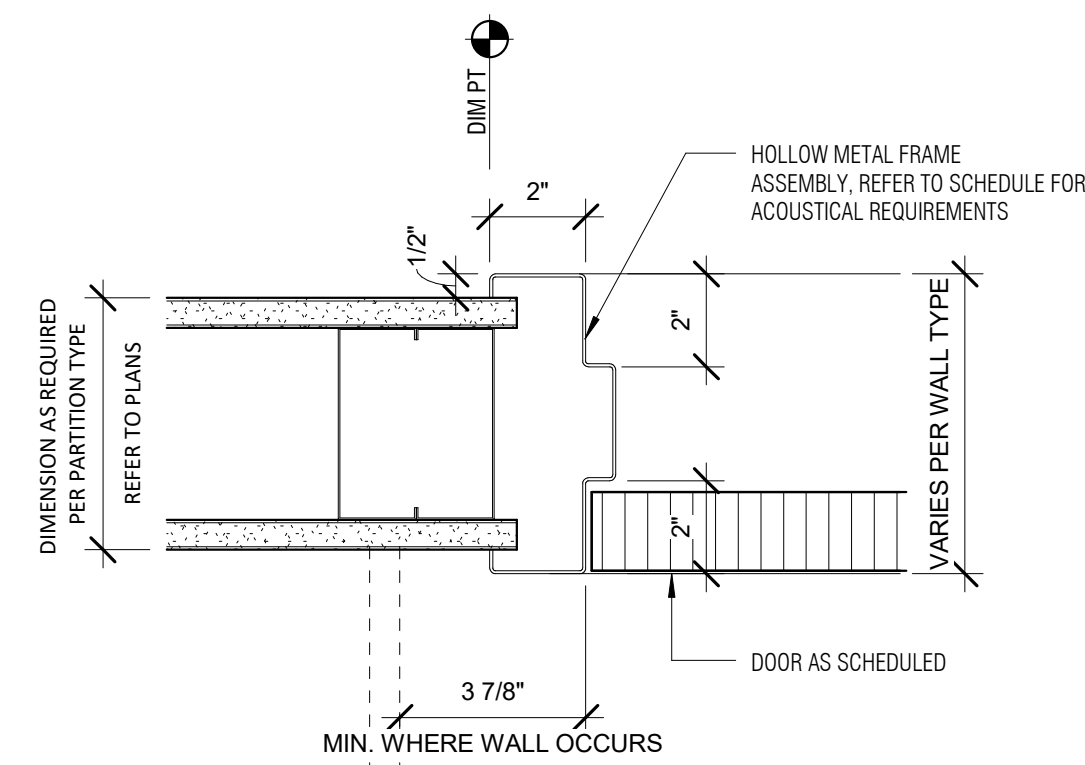
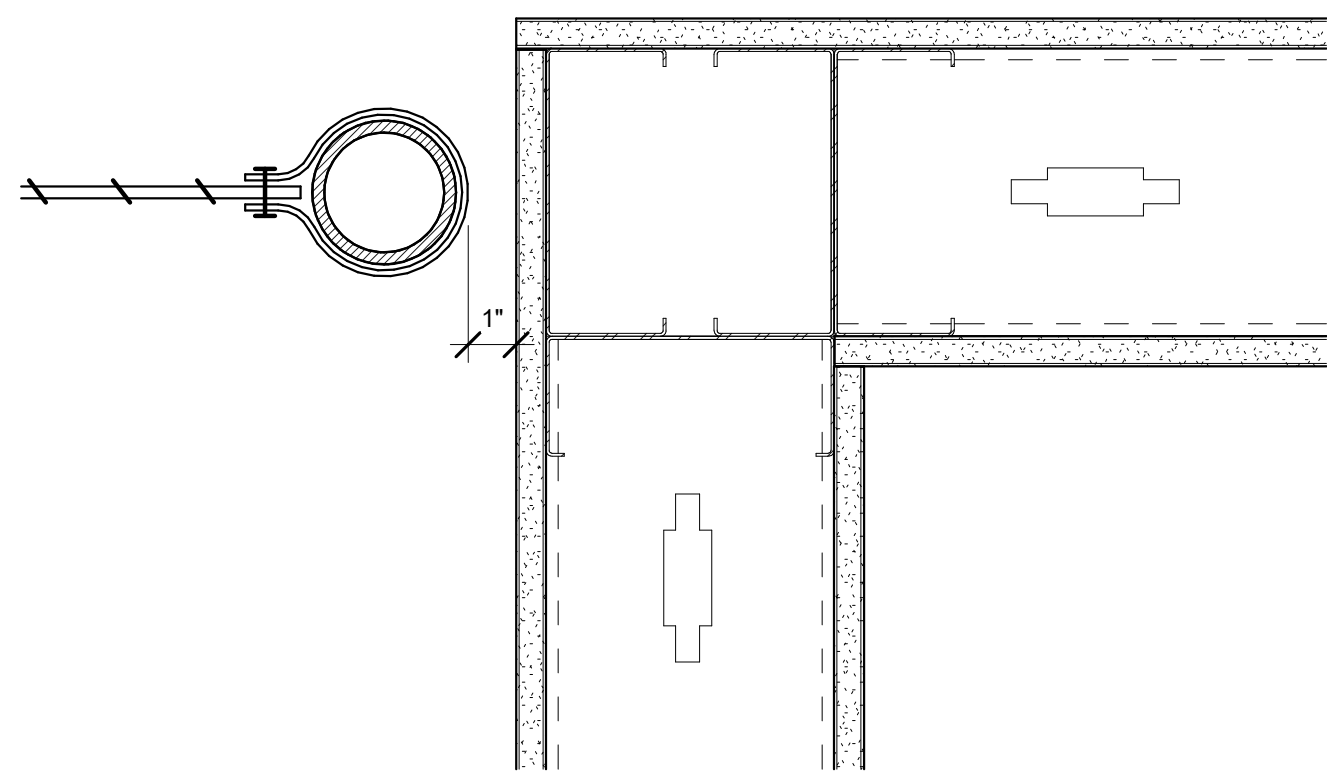
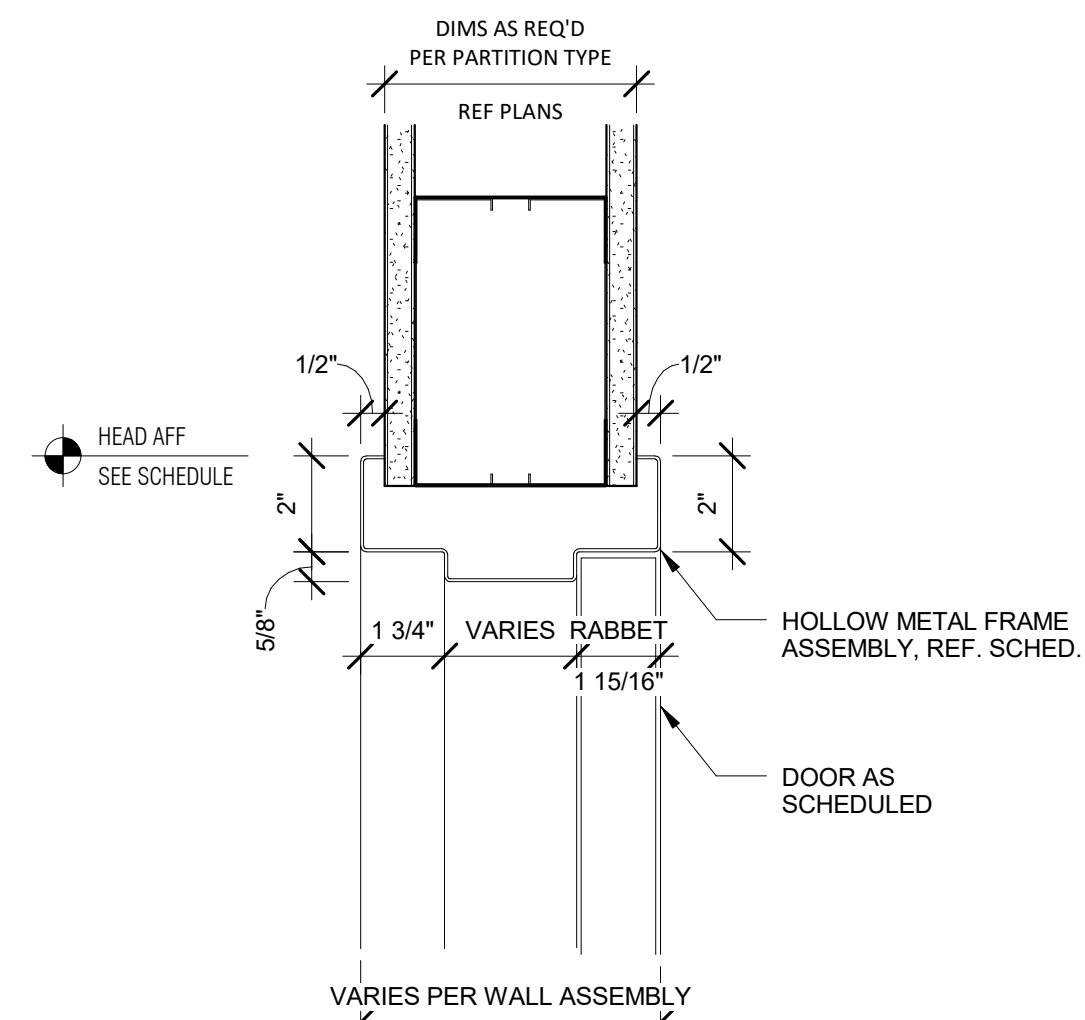
DRAWING: \$FILES PLOTTED ON: 2/10/2020 11:19:48 AM PLOTTED BY: \$USERNAMES \$COMPUTERNAMES

Room Number	Room Name	Floor Finish	Base Finish	Walls				Ceiling Finish	Key Notes
				North Finish	East Finish	South Finish	West Finish		
100	EDUCATION MATERIAL	CONC-1	WB-1	WD-1	WD-1	WD-1	WD-1	GWB-3	
101	ELEC.	CONC-1	NA	WD-3	WD-3	WD-3	WD-3	EXP	
101A	FIRE RISER	CONC-1	NA	WD-1	WD-1	WD-1	WD-1	EXP	
102	PESTICIDES	CONC-1	NA	WD-1	WD-1	WD-1	WD-1	GWB-3	
103	MECH.	CONC-1	NA	WD-1	WD-1	WD-1	WD-1	EXP	
104	TOOL ROOM (LOCKED)	CONC-1	WB-1	WD-1	WD-1	WD-1	NA	EXP	
104A	TOOL LIBRARY	CONC-1	WB-1	WD-1	NA	WD-1	NA	EXP	
105	HANGING TOOLS	CONC-1	WB-1	WD-1	NA	WD-1	WD-1	EXP	
106	SAFETY EQUIP.	CONC-1	WB-1	WD-1	NA	WD-1	WD-1	EXP	
107	SMALL ENGINE PARTS	CONC-1	WB-1	WD-1	NA	WD-1	WD-1	EXP	
108	UNISEX RR	CONC-1	RB-1	GWB-2 & FRP-1	GWB-2 & FRP-1	GWB-2 & FRP-1	GWB-2 & FRP-1	GWB-3	
109	LOBBY	CONC-1	NA	WD-4	WD-4	WD-4	WD-4	WD-4	
110	LOCKER	CONC-1	RB-2	GWB-1	GWB-1	WD-1	GWB-1	GWB-3	
110A	SHOWER	CONC-1	RB-1	GWB-2 & FRP-1	GWB-2 & FRP-1	GWB-2 & FRP-1	GWB-2 & FRP-1	GWB-3	
111	CORRIDOR	CONC-1	NA	WD-1	WD-1 & GWB-1	WD-1	WD-1	EXP	
112	LARGE VEHICLE BAY	CONC-1	WB-2	WD-2	WD-2	NA	WD-2	EXP	
113	BULK FLUID	CONC-1	WB-1	WD-1	WD-1	WD-1	WD-1	EXP	
114	ROPE DRYING ROOM / MUD ROOM	CONC-1	WB-1	WD-1	WD-1	WD-1	WD-1	GWB-3	
115	EQUIPMENT STORAGE	CONC-1	WB-2	WD-2	WD-2	WD-2	WD-2	EXP	
120	COVERED/UNSECURED EQUIPMENT STORAGE	CONC-1	CONC-1	MP-2 & CMU-1	NA	NA	NA	EXP	
201	COMPRESSOR MEZZANINE	WD-1	NA	WD-1	WD-1	NA	WD-1	EXP	
203	SHED 1								
204	SHED 2								
205	CONTAINER								
206	Wash Rack and Dumpster								

Door Number	Type	Fire Rating	Hardware	Door				Frame			Comments
				Width	Height	Material	Finish	Type	Material	Finish	
100-1	I		01	4'-0"	8'-0"	HM	PT		HM	PT	
101-1	A		02	3'-0"	8'-0"	HM	PT		HM	PT	
101A-1	H		03	3'-0"	8'-0"	HM W/Reclaimed Barn WD	Transparent		HM W/Reclaimed Barn WD	Transparent	CLAD
102-1	A		04	3'-6"	7'-0"	HM	PT		HM	PT	
103-1	A		05	3'-0"	7'-0"	HM	PT		HM	PT	
104-1	G		17	6'-0"	8'-0"	CHAIN LINK					MESH
104A-1	F		17	4'-0"	8'-0"	CHAIN LINK					MESH
105-1	F		17	4'-0"	8'-0"	CHAIN LINK					MESH
106-1	A		04	3'-6"	7'-0"	HM	PT		HM	PT	
107-1	F		17	4'-0"	8'-0"	CHAIN LINK					MESH
108-1	A		07	3'-0"	7'-0"	HM	PT		HM	PT	
109-1	D		08	5'-10"	8'-0"	AL	PT		AL	PT	Ref Alternate #4
110A-1	A		10	3'-0"	7'-0"	HM	PT		HM	PT	
111-1	C		11	3'-6"	8'-0"	HM	PT		HM	PT	Ref Alternate #4
111-2	B		12	6'-0"	7'-0"	HM	PT		HM	PT	
114-1	A		13	3'-0"	7'-0"	HM	PT		HM	PT	
114-2	A		13	3'-0"	7'-0"	HM	PT		HM	PT	
115-2	E		06	12'-0"	14'-0"	AL	PT		AL	PT	Overhead Door
115-3	E		06	12'-0"	14'-0"	AL	PT		AL	PT	Overhead Door
115-4	E		06	12'-0"	14'-0"	AL	PT		AL	PT	Overhead Door
115-5	E		06	12'-0"	14'-0"	AL	PT		AL	PT	Overhead Door
115-6	E		06	12'-0"	14'-0"	AL	PT		AL	PT	Overhead Door
115-7	E		06	12'-0"	14'-0"	AL	PT		AL	PT	Overhead Door
115-8	A		01	3'-0"	8'-0"	HM	PT		HM	PT	
115-9	E		06	12'-0"	14'-0"	AL	PT		AL	PT	Overhead Door
120-1	B		14	5'-0"	7'-0"	AL	PT		AL	PT	
120-2	G		16	5'-0"	8'-0"	CHAIN LINK					MESH
120-3	G		16	5'-0"	8'-0"	CHAIN LINK					MESH
120-4	G		16	5'-0"	8'-0"	CHAIN LINK					MESH
120-5	G		16	5'-0"	8'-0"	CHAIN LINK					MESH
120-6	G		16	5'-0"	8'-0"	CHAIN LINK					MESH
120-7	G		15	3'-0"	8'-0"	CHAIN LINK					MESH

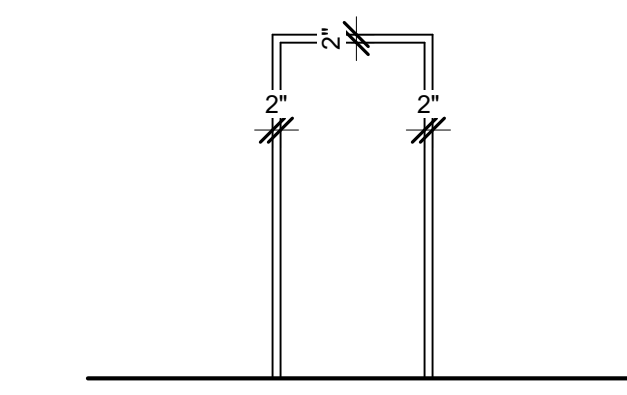
COMMENTS

- 1. INSULATED OVERHEAD GARAGE DOOR, MOTORIZED



DOOR PANEL ELEVATIONS

1/4" = 1'-0"



DOOR FRAME ELEVATIONS

1/4" = 1'-0"

REV	DATE	DESCRIPTION
1	02.10.20	BID SET REV 1

NOTE:
SCALE INDICATED ON DRAWING IS CORRECT IF DRAWING BORDER IS 22" X 34".