

EQUIPMENT GENERAL NOTES

- 1. ALL CONTRACTOR FURNISHED (CF) EQUIPMENT SHOWN ON THESE DRAWINGS WITH A FOUR DIGIT IDENTIFICATION NUMBER IS BASED ON A SPECIFIED MANUFACTURER. ANY MODIFICATION AND/OR SUBSTITUTION OF SAID EQUIPMENT IS SUBJECT TO COMPLETE COORDINATION BY THE CONTRACTOR OF ALL CONNECTIONS SERVICES, OPENING SIZE AND ANY OTHER CONSTRUCTION RELATED REQUIREMENTS.
- 2. ALL EQUIPMENT SHOWN ON THESE DRAWINGS WITH A FIVE DIGIT IDENTIFICATION NUMBER IS AN EXISTING PIECE OF EQUIPMENT. CONTRACTOR TO INSTALL EXISTING EQUIPMENT (LISTED AS OF/CI IN EQUIPMENT SCHEDULE). CONTRACTOR SHALL TEST OPERATION OF EXISTING EQUIPMENT WITH OWNER PRESENT PRIOR TO RELOCATION AND AFTER IT IS INSTALLED IN THE NEW FACILITY. EXISTING EQUIPMENT SHALL OPERATE IN THE SAME OR BETTER CONDITION AS PREVIOUSLY INSTALLED. COORDINATE SCHEDULE OF REMOVAL WITH OWNER.
- 3. CONTRACTOR TO VERIFY AND COORDINATE ALL STRUCTURAL, MECHANICAL, ELECTRICAL AND PLUMBING REQUIREMENTS OF EQUIPMENT WITH MANUFACTURER'S APPROVED SHOP DRAWINGS PRIOR TO INSTALLATION.
- 4. THIS LAYOUT IS PROVIDED FOR GENERAL LOCATION OF EQUIPMENT. UNLESS SPECIFICALLY LOCATED BY DIMENSIONS ON THE DRAWINGS, THE EQUIPMENT SHALL BE PLACED NEAR THE THE LOCATION ON THE DRAWINGS BUT IN THE MOST OPERATIONALLY EFFICIENT POSITION AND ORIENTATION.
- 5. SEISMICALLY BRACE ALL FIXED EQUIPMENT AND STORAGE EQUIPMENT PER LOCAL AND STATE SEISMIC RESTRAINT GUIDELINES.
- 6. CONTRACTOR SHALL REFER TO EQUIPMENT LAYOUT DRAWINGS FOR EXACT LOCATIONS AND COORDINATION OF ALL EQUIPMENT. REFERENCE Q001 FOR EQUIPMENT IDENTIFIERS AND DESCRIPTION.
- 7. COORDINATE WORK WITH ARCHITECTURAL FEATURES SO THE INTERFERENCE BETWEEN PIPING, EQUIPMENT, MECHANICAL WORK AND BUILDING STRUCTURE IS AVOIDED.

ABBREVIATIONS

AFF	ABOVE FINISH FLOOR
ATF	AUTOMATIC TRANSMISSION FLUID (XXX)
BO	BAR OIL
CA	COMPRESSED AIR
CC	CONTROL CONSOLE
CF/CI	CONTRACTOR FURNISHED / CONTRACTOR INSTALLED
CFM	CUBIC FEET PER MINUTE
CG	CHASSIS GREASE
CL	CENTERLINE
CNG	COMPRESSED NATURAL GAS
D	DIESEL
DEF	DIESEL EXHAUST FLUID
EC	ENGINE COOLANT
EO1	ENGINE OIL (2-CYCLE)
EO2	ENGINE OIL (15W-40)
EQ	EQUAL
EQ ID	EQUIPMENT IDENTIFIER
F/R	FILTER REGULATOR
FF	FINISH FLOOR
FMS	FLUID MANAGEMENT SYSTEM
FRL	FILTER, REGULATOR, LUBRICATOR
GPM	GALLONS PER MINUTE
HO	HYDRAULIC OIL
HP	HIGH PRESSURE
ID	IDENTIFICATION
NG	NATURAL GAS
NTS	NOT TO SCALE
OF/CI	OWNER FURNISHED / CONTRACTOR INSTALLED
OF/OI	OWNER FURNISHED / OWNER INSTALLED
OH	OVERHEAD
PAC	PUMP AIR CONTROLLER
S/O	SAND/OIL SEPARATOR
SPEC	SPECIFICATION
TLM	TANK LEVEL MONITOR
TYP	TYPICAL
UC	USED COOLANT
UG	UNDERGROUND
UNO	UNLESS NOTED OTHERWISE
UO	USED OIL
W	WATER
WWF	WINDSHIELD WASHER FLUID

CF/CI EQUIPMENT SCHEDULE

EQ ID #	DESCRIPTION	SPEC SECTION
7711	REEL, HOSE, COMPRESSED AIR	11 11 00

OF/OI EQUIPMENT SCHEDULE

EQ ID #	DESCRIPTION	SPEC SECTION
1098	BOARD, PEG, TOOL	N/A
1140	CABINET, FLAMMABLE MATERIALS, LARGE	N/A
1229	DOLLY, DRUM	N/A
1384	PALLET, STORAGE, HAZARDOUS MATERIALS, FOUR DRUM	N/A
1405	RACK, TOOL	N/A
1450	RACK, STORAGE, 72 BIN, 72 DRAWER	N/A
1455	RACK, BULK STORAGE	N/A
1458	RACK, BULK STORAGE	N/A
1683	UNIT, SHELVING	N/A
1688	SHELVING UNIT, 18 INCHES	N/A
1860	WORKBENCH, SEVERE USE, 6 FEET	N/A
2030	BENCH, BATTERY	N/A
2832	WISE, SWIVEL BASE, 5 INCHES	N/A
3280	EXTRACTOR, FUME, WELDING, PORTABLE, 800 CFM	N/A
20751	BUFFER/GRINDER, 10 INCHES, BENCH MOUNTED	N/A
29151	WELDER, MIG, PORTABLE, WITH WIRE FEED	N/A
31301	VACUUM, PORTABLE	N/A
37141	WASHER, HIGH PRESSURE, HOT WATER, PORTABLE, 3 GPM	N/A
72561	SYSTEM, DISPENSING, DEF	N/A

EQUIPMENT LINE TYPE LEGEND

CF/CI	_____
OF/CI	_____
OF/OI	- - - - -

SYMBOLS LEGEND

⌒	CENTERLINE
Ⓜ	KEYNOTES
ⓂⓂ	FRONT/APPROACH ACCESS TO EQUIPMENT
⬤	ELEVATION
—~—	BREAK LINE
Ⓧ	WASH EQUIPMENT KEYNOTES

NOTE:
SCALE INDICATED ON
DRAWING
IS CORRECT IF DRAWING
BORDER IS 22" X 34".



Maintenance
Design
Group

1600 Stout Street, Suite 940
Denver, CO 80202



503.525.9511
www.opsisarch.com
920 NORTHWEST SEVENTEENTH AVENUE
PORTLAND | OREGON | 97209
copyright 2016 opsis architecture llp
ALL RIGHTS RESERVED

PERMIT / BID SET
10.04.2018



Portland Parks and Recreation

Amanda Fritz, Commissioner - Kia Selley, Interim Director

EQUIPMENT SCHEDULE AND NOTES

Urban Forestry Maintenance Facility

PROJECT MANAGER: ROBIN LAUGHLIN

DATE: 11/15/2017 SCALE: REFERENCE DETAILS DRAWN BY: MCA SECTION:

REVISIONS

DATE	DESCRIPTION	BY



Q0.01

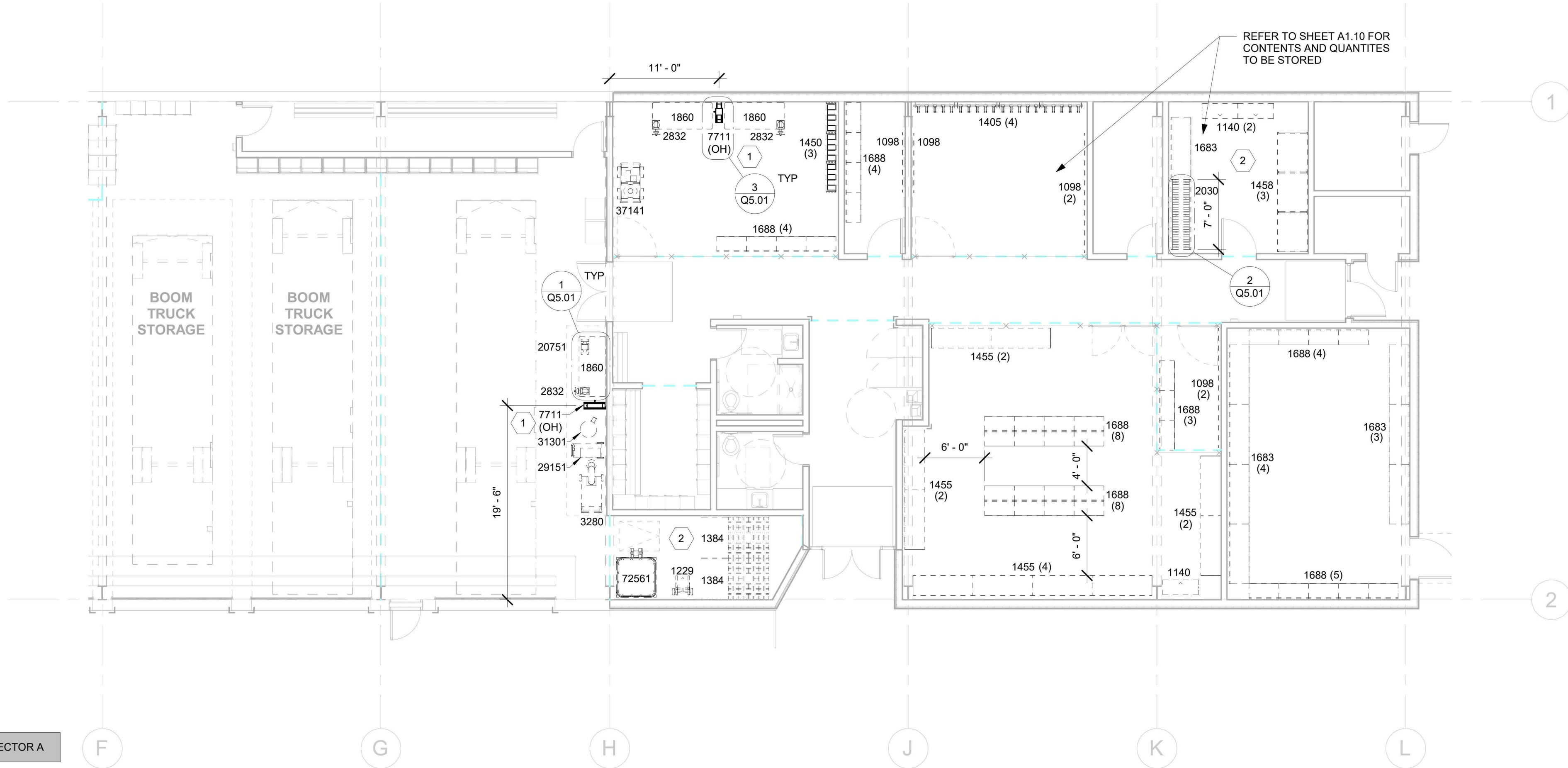
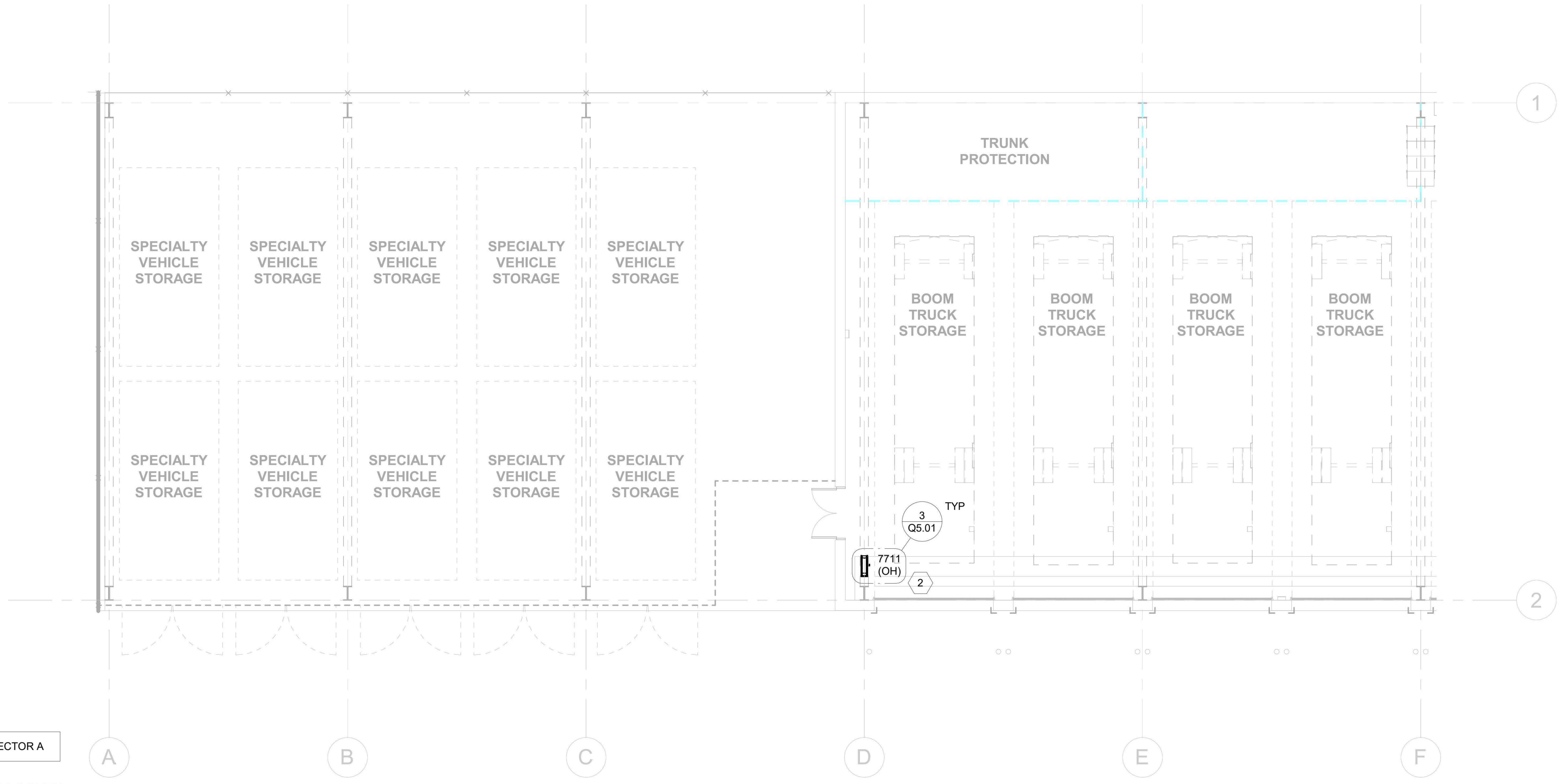
Job No.
4655-01

SECTOR B SECTOR A

1 LEVEL 01 SOUTH
1/8" = 1'-0"

SECTOR B SECTOR A

2 LEVEL 01 NORTH
1/8" = 1'-0"



DRAWING SHEET NOTES

- 1 REFERENCE SHEET Q0.01 FOR ALL EQUIPMENT DESCRIPTIONS.
- 2 REFERENCE SHEET Q0.01 FOR ALL GENERAL EQUIPMENT NOTES
- 3 REFERENCE SHEET Q0.01 FOR ALL ABBREVIATIONS
- 4 REFERENCE SHEET Q0.01 FOR ALL EQUIPMENT KEYNOTES

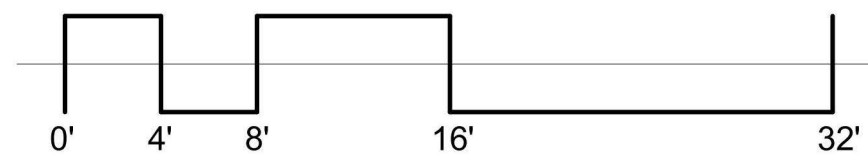
EQUIPMENT KEYNOTES LEGEND

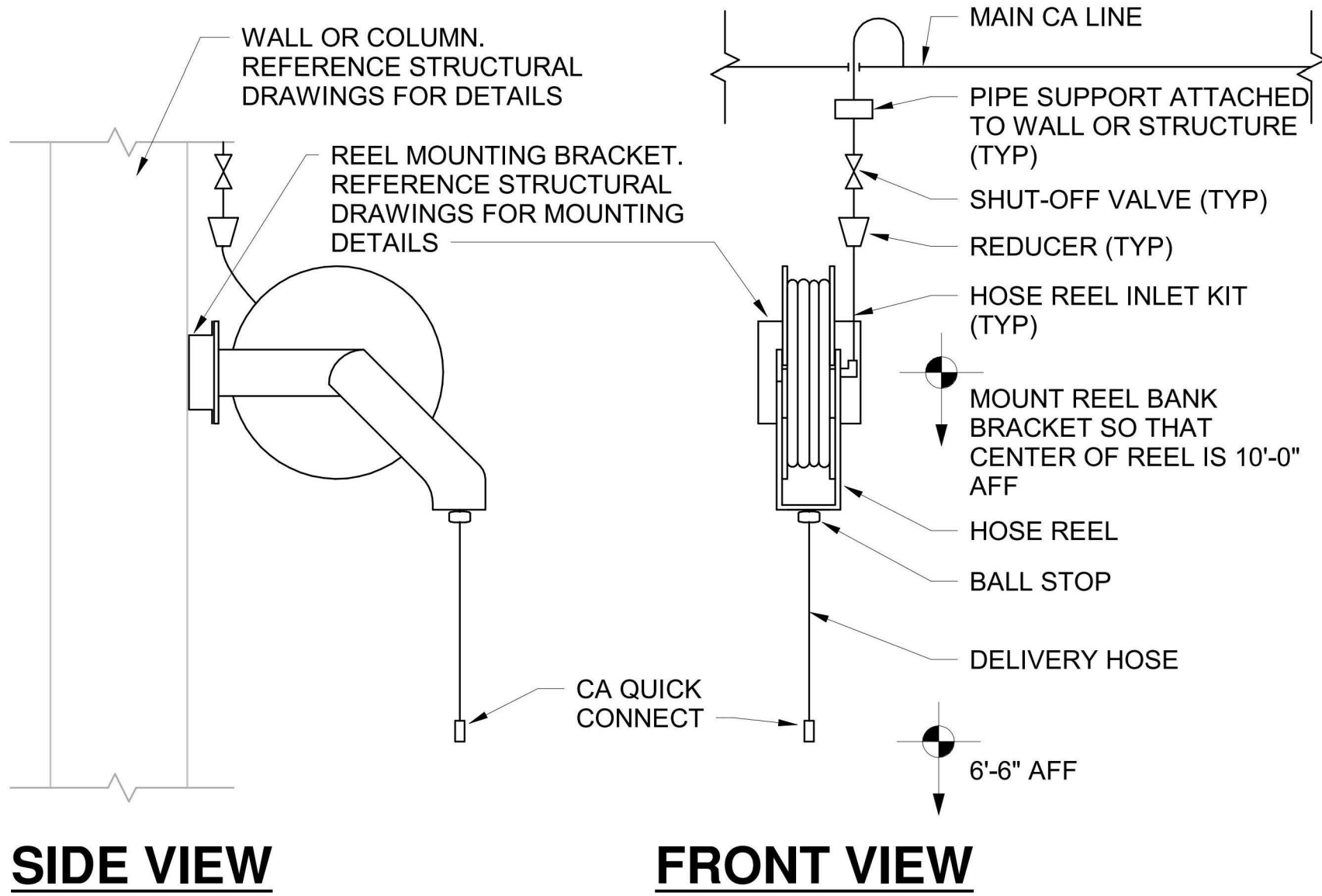
- 1 CONNECT AIR REEL TO THE COMPRESSED AIR SYSTEM.
- 2 REFERENCE SHEET A1.10 FOR CONTENTS AND QUANTITIES TO BE STORED

REVISIONS

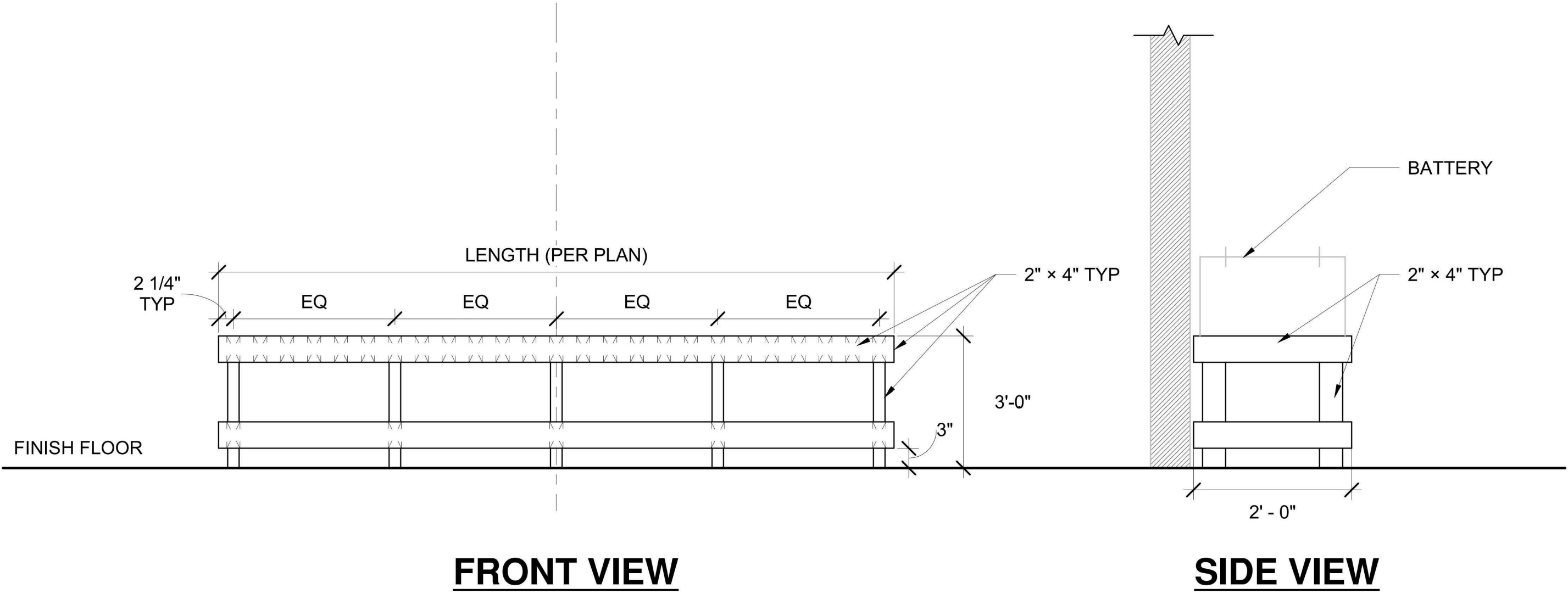
DATE	DESCRIPTION	BY

NOTE:
SCALE INDICATED ON
DRAWING
IS CORRECT IF DRAWING
BORDER IS 22" X 34".



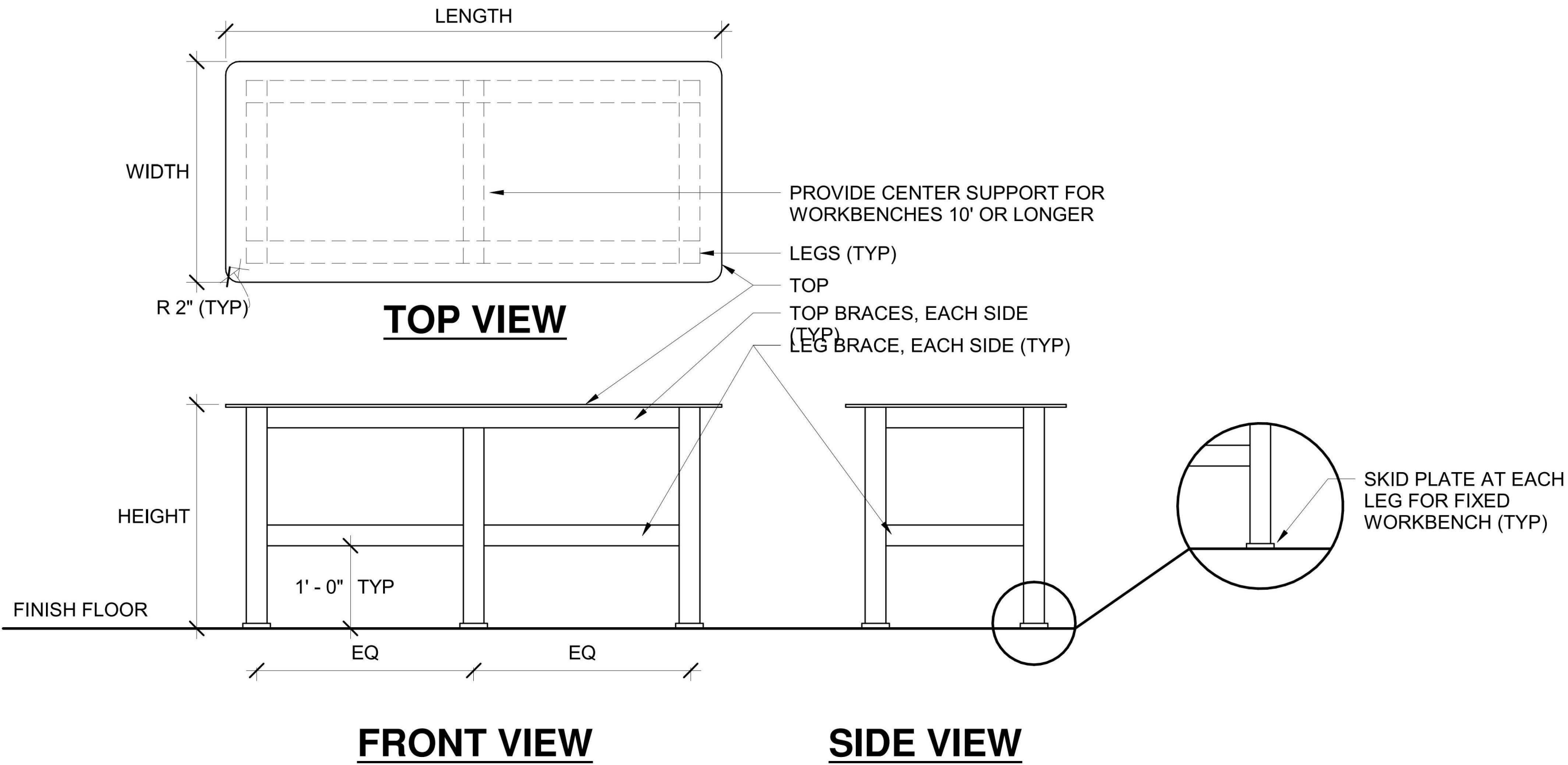


3 REEL BANK, COMPRESSED AIR, SIDE MOUNTED DETAIL
NTS



NOTE:
1. CAPACITY SHALL BE 200 POUNDS PER LINEAR FOOT
2. DRY PAINT THICKNESS, MINIMUM: 6 MILS.
3. UNIT MATERIALS SHALL BE GRADE 1 OR BETTER HARDWOOD (PREFERABLY SMOOTH, STRAIGHT, KILN DRIED OAK), MARINE GRADE WOOD GLUE, AND ZINC PLATED, NO. 12 BY 2-3/4" FLAT HEAD WOOD SCREWS.
4. ALL JOINTS SHALL BE GLUED AND FASTENED WITH COUNTERSUNK WOOD SCREWS.
5. FINISH ALL EXPOSED WOOD SURFACES SHALL BE SEALED AND FINISHED WITH ONE TO ONE MIX OF INTERNATIONAL PAINT INTEGARD-740 EPOXY PAINT PRODUCT NUMBER AND CURING AGENT NUMBER 4346-B APPLIED PER MANUFACTURER'S RECOMMENDATIONS IN OWNER'S CHOICE OF COLOR.

2 BATTERY BENCH DETAIL
3/4" = 1'-0"



1 WORKBENCH SEVERE USE DETAIL
3/4" = 1'-0"

NOTE:
SCALE INDICATED ON
DRAWING
IS CORRECT IF DRAWING
BORDER IS 22" X 34".

REVISIONS		
DATE	DESCRIPTION	BY