



# **BUILD OUT GUIDE**



# BUILD OUT GUIDE

These guidelines include specifications and requirements for your interior and exterior layout, signs, décor, equipment, decoration, and more. The construction management team or approved construction management vendor will assist you in this process and will review your construction plans before construction begins to ensure adherence to Camp Bow Wow® standards.

Camp Bow Wow® uses a distinctive “camp” motif throughout all facilities. To ensure the overall look and feel of all Camps are the same, the décor elements included in this section, particularly the “log” theme and color scheme, which comprise elements of Camp Bow Wow®’s federally protected trade dress, must be consistently used as provided herein. If you have any questions, please reach out to your Operations Liaison.

Logos and Approved Colors .....	4
Camp Exterior .....	5
Building Signage .....	5
Awning .....	5
Front Door Graphics .....	5
Parking .....	5
Basic Layout.....	6
Vestibule/Lobby .....	7
Fireplace.....	7
Artwork .....	7
Camp Logo Disk .....	8
Camper Cam Monitor .....	8
Furniture .....	8
Retail Shelving .....	9
Vinyl Plank Flooring .....	10
Base Trim.....	10
Interior Doors.....	10
Paint .....	10
Window Coverings.....	10
Floor Mats.....	10
Clock .....	10
Log Bragger Stand .....	11



Reception Area .....	11
Log Reception Desk .....	12
Lighting Above Desk .....	12
Check In/Check Out.....	12
Interview Room .....	13
Office .....	13
Restroom .....	14
Groom Room.....	15
Groom Room Equipment.....	16
Prep Room and Break Room.....	18
Luxury Suites .....	20
Teacup Room .....	21
Camper Lounge.....	21
Training Room .....	22
Cabins .....	22
Sizes .....	23
Delivery .....	23
Design and Layout .....	24
Play Yards .....	25
Fencing .....	25
Supplies.....	26
Outdoor Play Yards.....	28
Camp Grounds .....	32
Required Finishes .....	33
Paint Colors .....	33
FRP .....	33
Corrugated Steel .....	33
Base Trim.....	33
Decor .....	34
Window Treatments .....	34
Wall Art .....	34
Wall Murals .....	39
Lobby Mats .....	40
Leash Holders .....	40



Signage.....	41
Advertising Materials .....	41
Whiteboard Graphics .....	42
Holiday Décor .....	43
Mechanical, Electrical and Security Requirements .....	43
Mechanical Design Criteria .....	43
Electrical Requirements .....	43
Phone and Data Lines.....	43
Lighting Requirements .....	43
Security and Alarm Requirements.....	44
Webcam System .....	44
2020 MODERNIZATION REQUIREMENTS .....	45



## Logos and Approved Colors

Camp Bow Wow® uses two approved colors in the logo design: Camp Bow Wow Red (Pantone 201) and black. Camp Bow Wow® new marketing materials and branding also include the colors listed below.

### BRAND SPECIFIC COLORS



#### CAMP BOW WOW

PMS: 5405C  
CMYK: 73/48/33/7  
RGB: 82/115/138  
HEX: #52738A



#### HOME BUDDIES

PMS: 7741U  
CMYK: 63/29/64/8  
RGB: 102/140/110  
HEX: #668C6E



#### BEHAVIOR BUDDIES

PMS: 7543C  
CMYK: 46/27/25/0  
RGB: 144/165/176  
HEX: #8FA5B0



### ACCENT COLORS



#### PRIMARY ACCENT COLOR

PMS: 201C  
CMYK: 25/100/77/17  
RGB: 165/29/55  
HEX: #A51D37



#### SECONDARY ACCENT COLOR

PMS: warm gray 4  
CMYK: 27/30/32/0  
RGB: 189/172/164  
HEX: #BDABA3





## Camp Exterior

It is important that the entry to your business be inviting. Because each site is unique, there is no one single method of building out your entry. Below are two examples that are acceptable. If possible, your entrance should contain some wood trim to give the entry a rustic "Camp" appearance. You may be required to install a safety entrance outside of your Camp, depending on nearby traffic volume and risk to Campers.



## Building Signage

The exterior signage should be integrated with your storefront design. You should meet with your architect and sign vendor to coordinate this work so the signage can be optimized to make a great first impression.



## Awning

If you install red trim accents or a red painted awning, you must have them painted to match Sherwin Williams #6314 Luxurious Red.

## Front Door Graphics

Your front door should contain the approved logo, your business hours, and your phone number. Approved graphics are available for ordering on the Doghouse>Vendors>Camp Signage

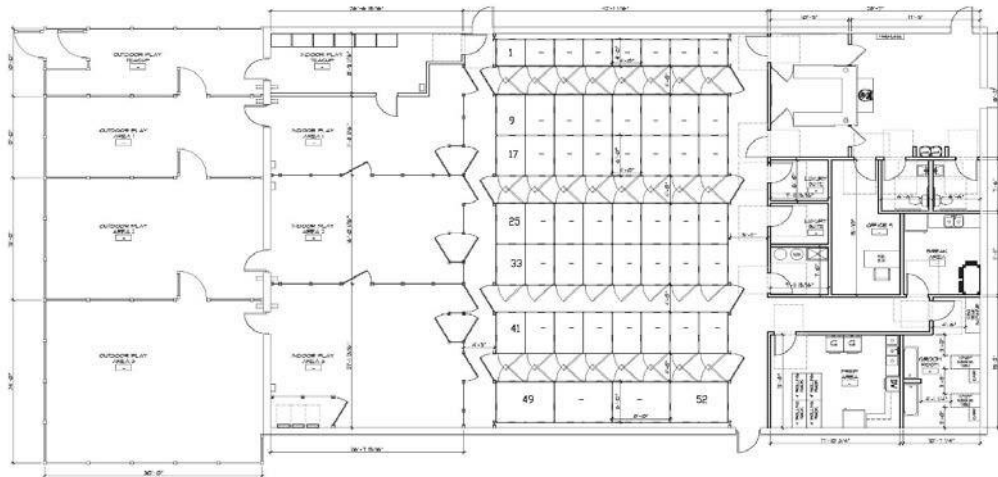
## Parking

All parking spaces should be clearly marked, and you must comply with federal ADA parking space requirements and any other local or state parking codes.

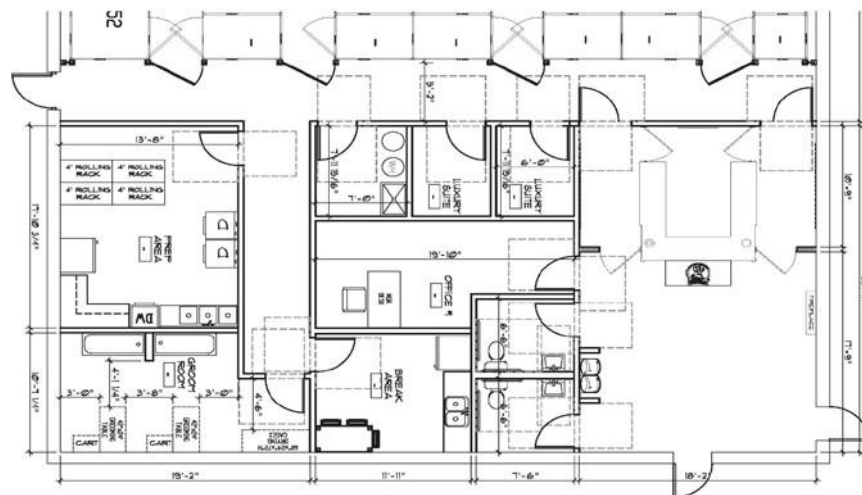


## Basic Layout

Below is a basic layout of a Camp. The lobby and offices are in the front of the building, with the play yards and cabins in the rear and the exterior play yards on the side. The building pictured below is 6,000 square feet, and will be referenced throughout this section.

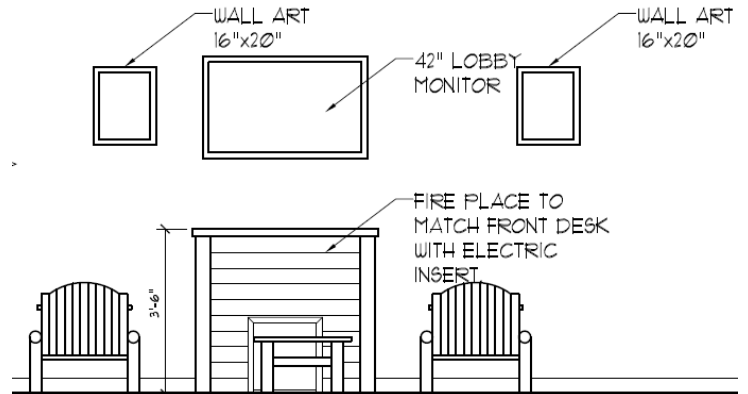


The front portion of the average Camp is approximately 1500 square feet. The layout shown below is typical, however, adjustments are commonly made to use existing walls and to meet local code requirements. The rooms shown below are: the lobby and reception area, the luxury suite/isolation room, the office, 2 ADA restrooms, the groom room, the prep area, the break area, the teacup room and teacup yard, and the training room.



The wall separating the lobby and offices from the boarding and play area should be full height to the ceiling with sound attenuation insulation. If the Camp is located in a strip center, additional sound proofing measures are taken to minimize noise transmission. Below, you will find plan details, photos, and specifications for each of the rooms listed above.

## Vestibule/Lobby



## Fireplace

You must order an approved wood fireplace to match the front desk, with the following specifications. To order, please contact Joel Schmeichel at [joelschmeichel5858@gmail.com](mailto:joelschmeichel5858@gmail.com) or (989) 798-8319. You can find the order form on the Dog House.

- Wall Mounted fireplace -Dimensions: 50"W x 44"H x 16"D or corner fireplace with the Dimensions of 36"wide on each wall.
- Insert: Approx. 23"W x 20"H (depends on insert model)
- Siding: 2x6 quarter log siding in Red Pine, stained with Sherwin Williams "Golden Oak" and finished with Sher-Wood High Build Pre-Cat Lacquer by Sherwin Williams (T77F56)



## Artwork

All lobby murals, artwork, posters and decorations must meet Camp Bow Wow® specifications. No bulletin boards are permitted in the lobby. You can find approved artwork and black frames from Frames Plus® at [www.framesplusinc.com](http://www.framesplusinc.com). You can order approved artwork by going to the Frames Plus website and using Camp Bow Wow®'s



login name: campbowwow. You do NOT need to create your own account. The approved artist collection is by Ron Schmidt and Tina Poochino. For specific information on approved art pieces and how to find them, please refer to the approved artwork section of this manual, below. Art pieces must be 20" x 16" or 16" x 20."

- You are required to have 4-6 art pieces in the lobby, however, no artwork is permitted on the same wall as the Camp Bow Wow® logo disc.
- You may also install a maximum of eight 8" x 10" photos in the lobby, all of which must be in the approved black frames from Frames Plus and placed in an approved area, typically to the right of the fireplace, if space allows. These photos may consist only of: 1 "Camper of the Month" photo; 2 "Foster Dogs" photos; 1 "Camp Counselor of the Month" photo; and 4 frames containing required display certificates, such as your business license and/or awards issued by us.
- For safety purposes, all black frames must be fastened to the wall with either 2 black drywall screws through the frame and into a drywall anchor in the wall or finish nailed into the wall.

## Camp Logo Disk

You must place the approved Camp Bow Wow® logo disc prominently in the lobby, either on the front of the desk or on the wall behind the desk. Logo disc is provided by Joel Schmeichel at [joelschmeichel5858@gmail.com](mailto:joelschmeichel5858@gmail.com) or (989) 798-8319. No other artwork may be placed on the wall with the logo disc.

## Camper Cam Monitor

This monitor shows customers an internal view of what they may see on the internet. You are required to have this over the fireplace. The monitor should, at a minimum, be a flat screen 40" TV, wall mounted and centered. The TV should be mounted at a height of 72" from the floor, at its center.

## Furniture

You are required to have a minimum of 2 chairs and 1 table, or 1 bench or loveseat and 1 table, to allow customers to view the Camper Cam monitor or to wait for their Camper. You may purchase more furniture if your lobby has room. To order, please visit <http://www.3place.com> or refer to the Master Supply list.





## Retail Shelving

Other than quick-release collars, retail is not required at Camp Bow Wow®, but if you decide to sell retail items, you must use the approved shelving and hangers. No metal or wire fixtures are permitted in the lobby. To order, please visit <http://www.logfurnitureplace.com> or refer to the Master Supply list.

Hidden Lake Cedar Log Bookshelf  
(Light honey finish) (Item C4023)  
Different sizes available.



Heavy Duty Retail Shelf  
(Light honey finish)



Log trim black slat wall (light honey finish) – All slat wall displays must be black or natural wood with log trim.





## Vinyl Plank Flooring

Vinyl wood plank flooring should be installed in the lobby, check in/check out areas, restrooms and typically in the offices. It can also be used in the groom room, prep room, luxury suites and break room. You must order item VG-5-7 48" x 7" planks from the Karndean International Van Gogh collection, in the color "Burnt Ginger." Please contact Paul Schallberg at Star Flooring to order, at (303) 443-9075.



## Base Trim

You should order 6" composite decking trim with a square edge from Trex Select® Composite Decking, in the Woodland Brown color.

## Interior Doors

All interior doors should be of knock down hollow metal frames with solid core birch veneer door slabs with Wilsonart Monticello Maple #7925 and a factory clear finish. Metal frames and metal doors are painted with Sherwin Williams Brevity Brown #6068-DTM Acrylic Industrial Enamel in a semi-gloss finish.

## Paint

All walls in the lobby and front rooms should be painted in Sherwin Williams Svelte Sage #6164 with a satin finish. All walls in back of Camp and specific rooms noted herein should be painted in Sherwin Williams Sleepy Blue #6225 with a satin finish. All hard lid ceilings (gypsum board) and all walls in Luxury Suites and Isolation Rooms above the porcelain wall tile should be painted in Sherwin Williams Snow Bird White #7004 with a satin finish.

## Window Coverings

Windows may be left uncovered in the lobby, but if you need or want a shade, you must use only the approved Bali 2" faux wood blinds, 5007 Natural.

## Floor Mats

One 3' x 5' mat is required at the front desk and one 4' x 6' mat is required at the front door in the lobby. The mats must be in the approved style and color with the current Camp Bow Wow® logo. Specific requirements can be found below.

## Clock

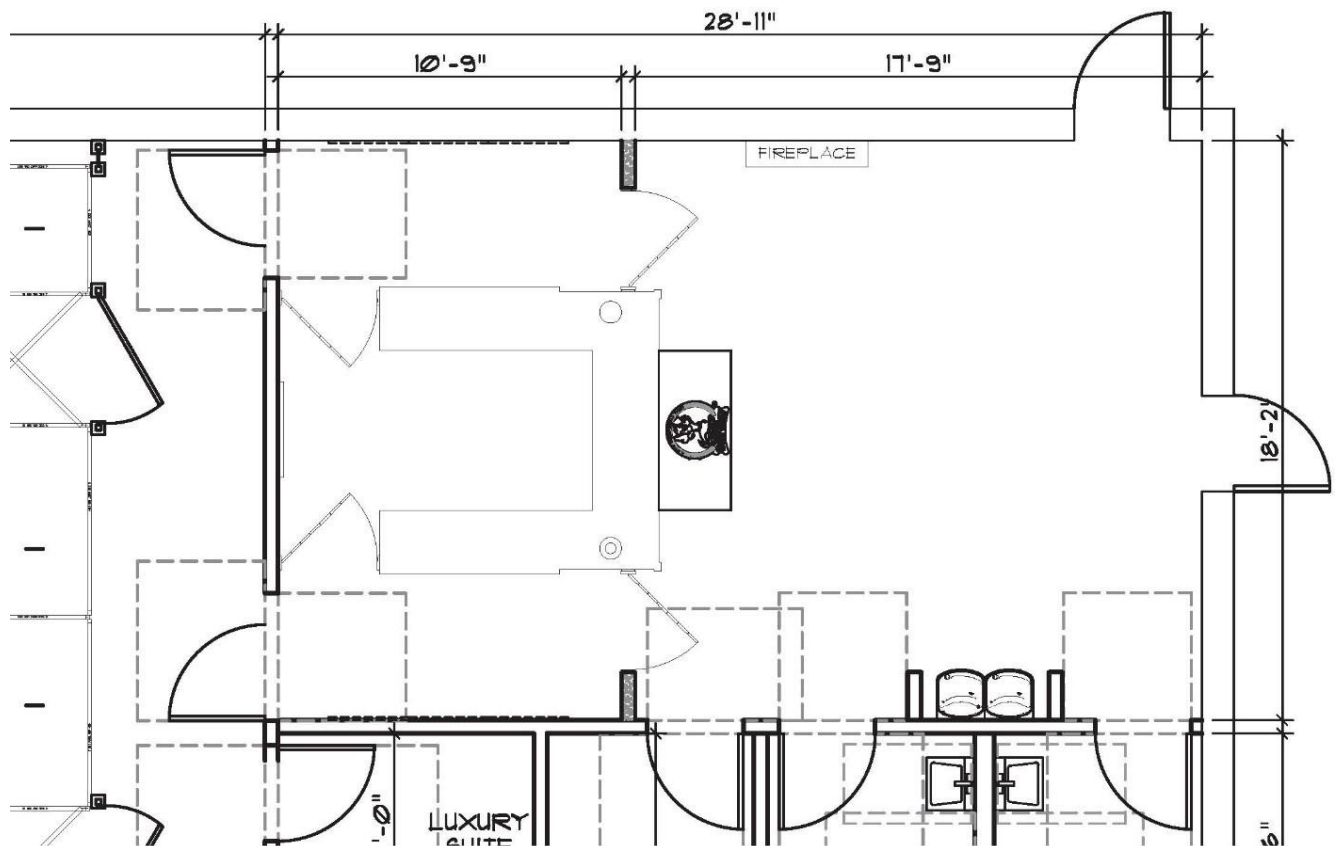
The approved lobby clock is available from an approved vendor. You may not place the clock behind the front desk – it must be out in the lobby and mounted to the wall at 84" above the floor at its center. You also may not place the clock above or on the fireplace.



## Log Bragger Stand

The log bragger stand must be placed within the first 10 feet inside your front door, but ideal placement is within 5-7 feet of the entrance and on the right side of the door in a place that will let you use both sides of the stand. To order, please contact Joel Schmeichel at [joelschmeichel5858@gmail.com](mailto:joelschmeichel5858@gmail.com) or (989) 798-8319.

## Reception Area





## Log Reception Desk

The approved desk is built of pine wood, with quarter log pine siding and trim. The desk serves as both the primary security control center and the check-in and check-out area. Data and electrical cabling are dropped down from the ceiling through two vertical log posts and installed behind the desk. At the lower desk top is a desktop computer, portable phones, a credit card machine, and a fax machine/printer. You may only place approved marketing materials on the tall transaction top. No filing cabinets are allowed in the lobby except under the desk and hidden from customer view. The desk can be ordered from Joel Schmeichel at [joelschmeichel5858@gmail.com](mailto:joelschmeichel5858@gmail.com) or (989) 798-8319.



## Lighting Above Desk

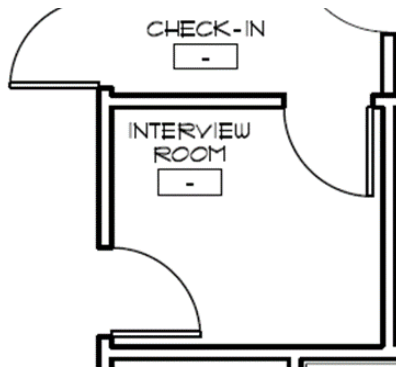
You must order three, triangle-shaped red pendant lights to center above the desk from an approved vendor.

## Check In/Check Out

Doors leading from the check-in and check-out areas to the boarding area swing "into" the boarding area. These doors have 16" x 34" windows with safety glass and automatic door closers.

## Interview Room

If you have an interview room, it should be located as close to the check-in area as possible. Camp Bow Wow® do not permit you to install a webcam in this room.

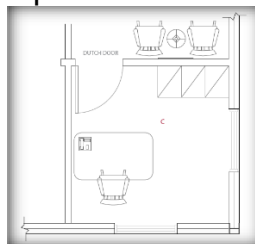


The minimum specifications of the interview room are:

- The room must be 8' x 8' in size.
- A Dutch door leading into the boarding area. The door from the lobby to the interview room should be a solid door with no window.
- Walls must be covered with a 4" Roppe #182 Toffee cove base and Almond FRP to 52" with Sherwin Williams Svelte Sage # 6164 paint above the FRP.
- The floor may be either sealed concrete or the approved wood grain vinyl plank.
- The ceiling may be acoustical ceiling, or an open ceiling depending on the construction of the Camp.
- No electrical below 48" is permitted. If existing electrical is below 48" in this room, safety covers are required.
- An approved wooden spray bottle holder should be placed outside the room near the Dutch door, and an emergency supply box should be installed inside the room at 48" high.
- You must hang a minimum of two (2) pieces of approved artwork.

## Office

Ideally, the office is located close to the reception area and the lobby, so the manager has a good line of sight for incoming Campers.



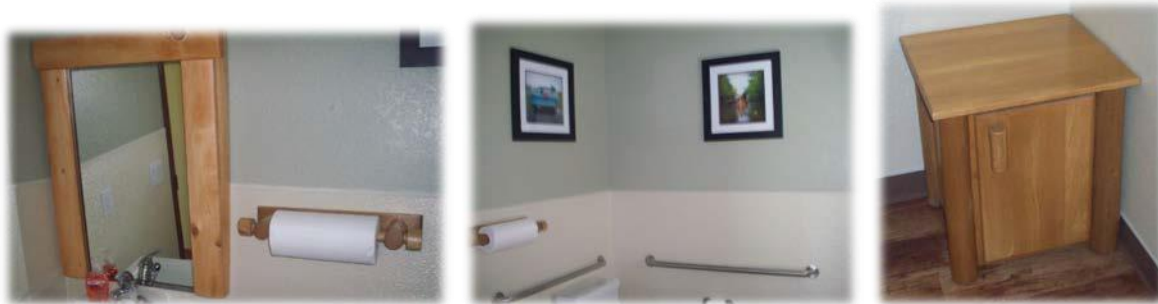
- A Dutch door is required if the office is off the lobby. ~~If the office is located in the back of house a solid standard door may be installed.~~
- The minimum size of the office should 8'x 12'.
- The walls should be painted with Sherwin Williams Svelte Sage #6164, with a 4" Roppe #182 Toffee cove base. FRP is not required inside the office.



- The flooring should be the approved wood grain vinyl plank, and
- The ceiling in the office should be acoustical ceiling tiles.
- Phone and data lines are needed at the desk for a phone and a computer.
- The furniture in the office should consist of a desk, a chair and filing cabinets.
- This is the only room in which personal artwork is allowed.
- If the office shares a window with the camp grounds, it must have approved window treatments.

## Restroom

Camp Bow Wow® prefers that you have separate public and employee restrooms if possible, because the public is not allowed into the boarding area unattended.

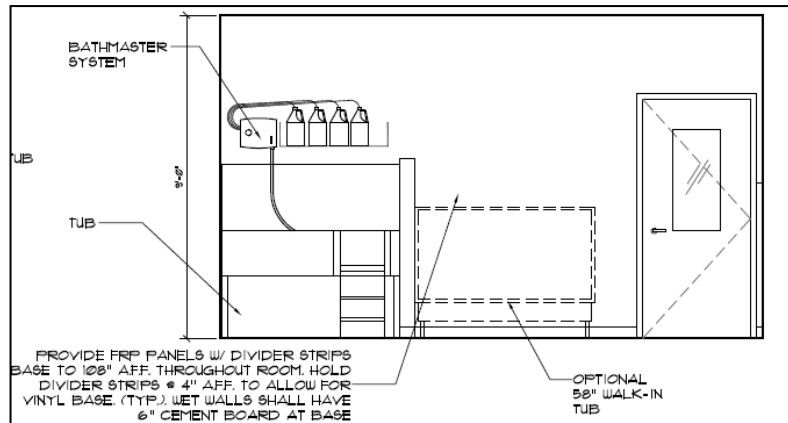


- All restrooms must be ADA compliant.
- The doors for the restroom must be solid core with privacy locks and automatic door closers.
- The walls require Almond FRP to 48" with Sherwin Williams Svelte Sage #6164 paint above the FRP, and a 4" Roppe #182 Toffee cove base unless a 6" base is required by local code.
- The public restroom floor must be the approved wood grain vinyl plank. The employee restroom floor may be the approved wood grain vinyl plank or sealed concrete.
- You must hang a minimum of 2 pieces of approved artwork in each restroom. However, if an employee restroom does not have public access, it is not required to have approved artwork or a log trimmed mirror.
- The mirror in the public restroom must have log trim. To order, please contact Joel Schmeichel at [joelschmeichel5858@gmail.com](mailto:joelschmeichel5858@gmail.com) or (989) 798-8319 and have the dimensions of the mirror ready when you order.
- For storage, you may install one "Water Closet Cabinet" in each restroom. To order, please visit <http://www.logfurnitureplace.com> or refer to the Master Supply list.

## Groom Room

All Camps must have a dedicated groom room that is at least 8' x 8' in size.

### BUILD OUT SPECIFICATIONS:



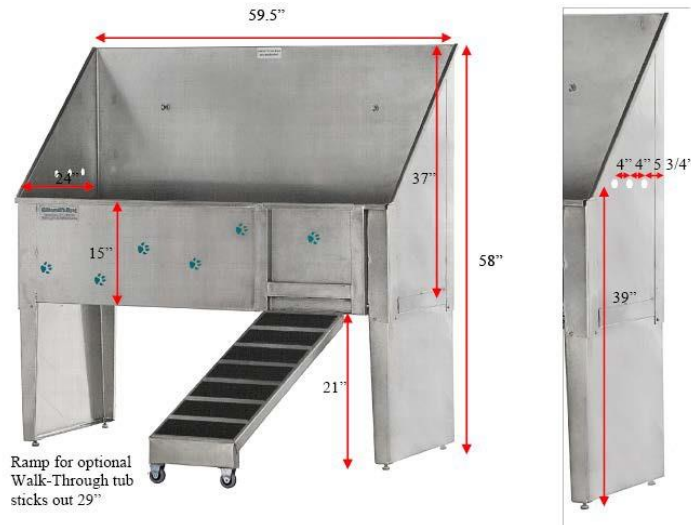
1. The door to the Groom Room must have a 16"x34" window with safety glass or be a door with full safety glass.
2. White FRP with pebble finish must be installed on all walls up to 8 feet (or to the ceiling if lower than 10 feet height) to protect the walls from water damage and provide for easier cleaning. Ceramic tile is approved on the walls behind the grooming tubs in lieu of FRP. Tile selection must be approved with your Operations Liaison prior to installation.
3. Walls above FRP should be Sherwin Williams Sleepy Blue #6225 with satin finish.
4. Storage cabinets are required for grooming supplies and no open shelving is permitted.
5. The floor should be polished (sealed) concrete with 6" composite decking trim with a square edge from Trex Select® Composite Decking, in the Woodland Brown color. Quarry tile with 6" sanitary base is an approved upgrade. If you opt to install the tile, you must install Daltile Diablo Red OT01 abrasive grain, with a 6" tall cove base.
6. One 3'x5' drain-through mat is required on the floor at each tub.
7. The ceiling should be acoustical or hard lid. If acoustical ceiling is used, the ceiling tiles must be white vinyl faced gypsum tiles. If hard lid is used, ceiling must be painted in Sherwin Williams Snow Bird White #7004 with a satin finish.
8. A ceiling exhaust fan is required to provide ventilation and control humidity.
9. Only 1-2 approved labeled professional drying cages are allowed that MUST remain in the Groom Room and are NOT to be used for boarding.
10. The "Bath Master System" from Groomer's Choice is required, and it should be installed above the grooming tub, as shown in the photo. To order, go to [www.groomerschoice.com](http://www.groomerschoice.com) and enter BM100 in the search bar, or, contact Zach at (888) 364-6242.
11. All electrical outlets in this room must be GFCI protected. The outlets have to be 48" above finished floor or in a waterproof box.
12. You must install one (1) 2'x3' "Camp Showers" dry erase board mounted at 6'6" to the top of the board. The dry erase board must be trimmed with wood siding to match the reception desk and have the approved graphics.
13. A web camera is required in this Groom Room but is not viewable by the public.



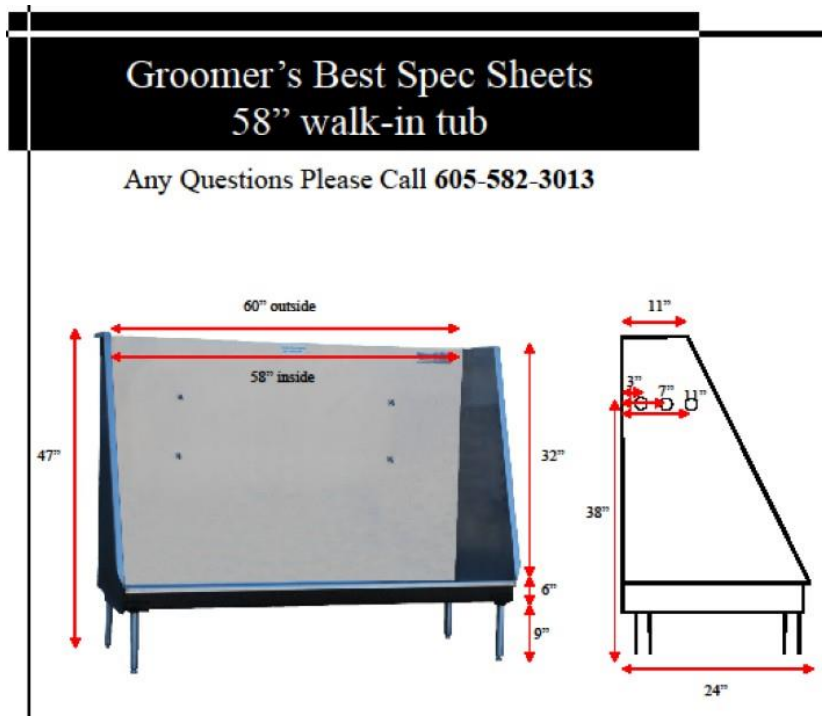


## Groom Room Equipment

The standard equipment in the Groom Room is the grooming tub shown below from Groomer's Choice. You may also install a grooming table, a canine, hitch, and a supply cabinet.



If you install a second tub, this low tub works great for larger breeds.



Inside the tub, the approved faucet is the American Standard grooming tub faucet from Groomer's Choice, Model LT 300 8" center-to-center hot/cold water inlets which fit stainless steel tubs. This should include a vacuum beaker. Camp Bow Wow® also recommends the PetLift's Smartway Hair Interceptor, which prevents clogging, in Model



PL62501. To order, please go to [www.groomerschoice.com](http://www.groomerschoice.com) or contact Zach at (888) 364-6242.



Drying cages are an optional upgrade at Camp. If you have them, you must purchase the approved cages from PetEdge®. The approved model is the ProSelect Modular Kennel Cage Bank Kits – Sandstone (3 units). To order, go to [www.petedge.com](http://www.petedge.com) and enter #ZW5620 in the search bar. If you'd like to order the optional wheels center, enter #ZW5219 in the search bar and select "large" to fit the 3-unit model. Please obtain Camp Bow Wow® approval before you order, to ensure that you get the right model (shown below).



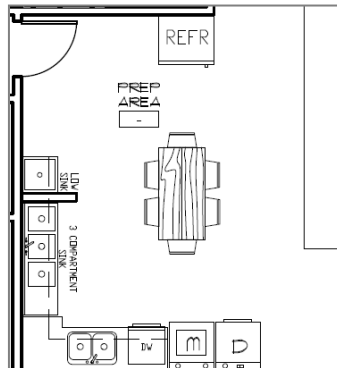
You can also order the ME Blue Force Cage Dryer & Accessory Kit by entering #TP14000 on [www.petedge.com](http://www.petedge.com).



## Prep Room and Break Room

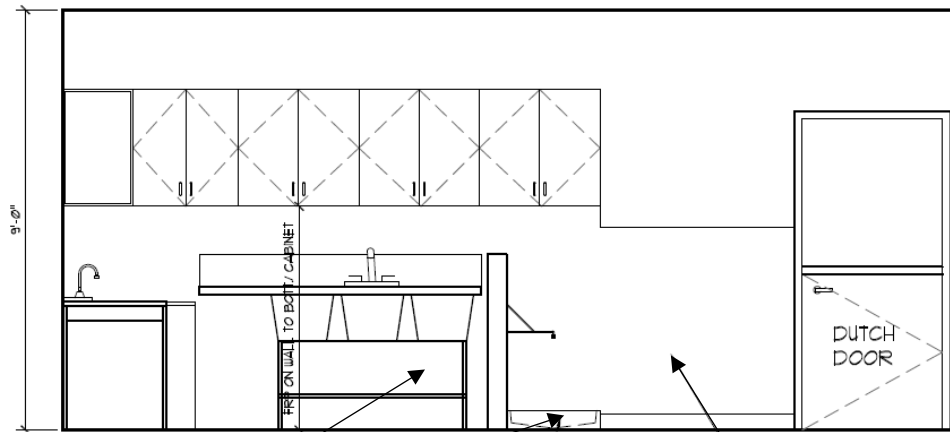
The Prep Area and Break Room are combined when possible. The Prep Area is the center of activity in the boarding area. You'll be preparing meals for the Campers in this room and storing the bowls, dishes, extra supplies and equipment.

The minimum size of this room is 12'x18'. The room shown below is 17'x19'.

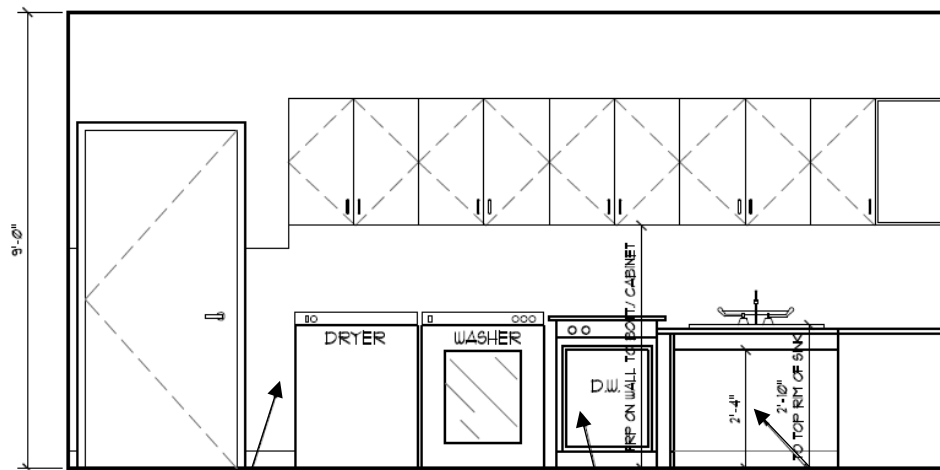


- This room should be near other plumbing sources, due to the cost associated with plumbing.
- The door into this room should be a full door with a window, Dutch door, or fence gate for visibility.
- The walls require FRP to 48" with Sherwin Williams Sleepy Blue #6225 above the FRP.
- The floor may be sealed concrete, but if you prefer, you can install the approved wood grain vinyl plank as an optional upgrade. You may also install the quarry tile as an approved upgrade for this room.
- The ceiling in this room may be acoustical ceiling, or an open ceiling depending on the construction of the Camp.
- Electrical outlets are needed for appliances and at the countertop for a microwave, coffee maker, etc.
- The required appliances are: washer and dryer (commercial grade), dishwasher (tall capacity and NSF certified), kitchen sink, refrigerator with freezer, laundry utility sink (2 or 3 basin recommended) and a mop sink with faucet tied into a Spartan SAM single station chemical mixing unit.
- The water heater is often in this area also. A 50 gallon model is the minimum required capacity. (80 gallon is recommended or a tankless model if natural gas service is available).
- Sufficient space will also be required for shelving and storage of mops, mop buckets, and cleaning chemicals. An extra storage closet is helpful if space is available.
- Artwork is optional, but if you install it, you must install items from Camp Bow Wow®'s approved collection.
- You must post one (1) 2'x3' "Staff notes" white board and one (1) 2'x3' "Medications" white board as well as OSHA/labor posters. Your white boards must have the approved graphics.
- All posted signage from the Dog House must be in approved black frames from Frames Plus. (OSHA and labor posters excluded). Contact your Operations representative for approval if any customized signage is desired.
- A 2'x3' log trimmed cork board may be installed for posting miscellaneous items. This board is the only location in Camp that miscellaneous items are permitted to be posted without being placed in the approved black frames from Frames Plus.

- The dry erase and cork boards must be trimmed with wood siding to match the reception desk. To order, please contact Joel Schmeichel at [joelschmeichel5858@gmail.com](mailto:joelschmeichel5858@gmail.com) or (989) 798-8319.
- The break room table and chairs are available from Log Furniture Place. To order, please visit: [www.logfurnitureplace.com](http://www.logfurnitureplace.com) or refer to the Master Supply list.



Stainless steel 2 or 3-compartment p sink with faucet -RP to protect walls from water



FRP to 4' and up to cabinets      NSF certified or commercial dishwasher      Kitchen sink with ADA-compliant cabinet

## Luxury Suites

- The luxury suite must be at least 6'x8' in size.
- The door to this room must have a full length window. The door requires a door knob (NOT a lever) to prevent dogs from leaving their suite unattended. A metal store front door with deadbolt can be used.



- The walls require 6" base trim and Almond FRP up to 48" with Sherwin Williams Svelte Sage #6164 paint above the FRP.
  - An optional upgrade to corrugated metal with composite wood trim also exists in place of FRP.
- The floor may be the approved wood grain vinyl plank or sealed concrete.
- The ceiling in this room may be acoustical ceiling, gypsum wall board or an open ceiling depending on the construction of the Camp.
- No electrical below 48" is permitted. If existing electrical is below 48" in this room, safety covers are required.
- The approved mural is required in the suite, and it must be a minimum size of 4' long. To order one of the approved murals, contact Cathy O'Brian at 952-278-0793 or via email at [cathy@muralsyourway.com](mailto:cathy@muralsyourway.com).
- The cots (2) in the suite must be from Kuranda (40"x26" large size aluminum cot). To order, please contact Kuranda at 1-800-752-5308.
- Food and water bowls must be available in the room.
- A web camera is required in each suite.
- A flat screen TV and DVD player are approved as an optional upgrade.
- No log beds are allowed in the Camper Luxury Suites for safety reasons.
- You must install two (2) CBW-approved boarding card holders on the outside of each Luxury Suite door.
- A 10-gallon galvanized Camper Can is required for each Camper suite, unless the plastic bin and rack system are used.

## Teacup Room

In an effort to properly care for Campers that are too small for the traditional Camp Bow Wow® play yards, Camp Bow Wow® has created a "Teacup Room" to provide a safe environment for Campers who are 15lbs. and under.

- The minimum size of the Teacup Room is 8'x12'.
- The door into the Teacup Room can be a Dutch door or a ½ door.
- The walls require 6" cove base, proper color FRP to 48" with Sherwin Williams Svelte Sage #6164 paint above the FRP. The color of walls is Sherwin Williams Sleepy Blue #6225 if open to the boarding area.
- The floor may be the approved wood grain vinyl plank or sealed concrete.
- You must install a minimum of 2 approved artwork pieces.
- The ceiling in this room may be acoustical ceiling, gypsum wall board or an open ceiling depending on the construction of the camp.
- No electrical below 48" is permitted. If existing electrical is below 48" in this room, safety covers are required.
- A web camera is required in this room.
- If you decide to use Kuranda cots in this room, they must be 25"x18" in size.
- "Teacup Condos" from Snyder Manufacturing are required if the Teacups are to stay overnight in the Teacup Room. To order, please contact Paul Floistad at (800) 756-0631, ext. 22, or pfloistad@snydermfg.com. A 25"x18" "plush mat" from Kuranda is required for each condo as well as a 6-gallon galvanized Camper Can with locking lid.
- You must provide a minimum of one 12" high "Puppy Play Go" play equipment. To order, please contact Gary Bessette at: (888) 828-3416 or via e-mail at puppyplayground@bellsouth.net.
- If the Teacup Room has no outdoor access, a pheromone enhanced synthetic potty grass system must be installed.
- You must install an emergency supply box with supplies.
- If the room has windows, approved window coverings must be installed.
- No dry erase boards are required, but if they are installed, they must meet Camp Bow Wow® requirements, have log trim, and contain the approved graphics. To order, contact Joel Schmeichel at joelschmeichel5858@gmail.com or (989) 798-8319.



## Camper Lounge

If your Camp has an existing Camper Lounge, it is a great place for older Campers to lounge and relax away from the hustle and bustle of the younger Campers. If you have one, Camp Bow Wow® does not permit you to board Campers in this room.



- The minimum size is 8'x8'.
- The door into the Camper Lounge can be a Dutch door or a ½ door.
- The walls require 6" base, FRP to 48" with Sherwin Williams Svelte Sage #6164 paint above the Almond FRP.
- The walls in this room should be 5' high. In some instances, the walls may be full height, but 5' high is preferable.
- The floor must be the approved wood grain vinyl plank.
- You must install a minimum of 2 approved artwork pieces.
- The ceiling in this room may be acoustical ceiling, gypsum wall board or an open ceiling depending on the construction of the camp.
- No electrical below 48" is permitted. If existing electrical is below 48" in this room, safety covers are required.
- A web camera mounted at 60" is required in this room.
- A minimum of two beds is required. Suite Beds from Kuranda or Log Dog Beds from JHE Log Furniture Place, pictured above, are permitted. If you would like to order the bed pictured visit [www.logfurnitureplace.com](http://www.logfurnitureplace.com) and search for the Lakeland Classic Log Dog Bed, Model No. Pvdogbed with burgundy mattress.



## Training Room

If space allows for a separate training room, it must be built out to the following specifications:

- The room must be at least 20' x 20' in size. The door should be a Dutch door, or a door with a 16x34 inch window.
- The floor must be clean, clear sealed concrete. 3000 grit polished concrete is an acceptable upgrade to clear concrete sealer. The approved vinyl plank flooring is also an acceptable upgrade.
- The ceiling is usually open to the roof deck, however, acoustical grid ceilings are permitted. It is suggested that the training room be separated from the Camp Grounds area and be fully enclosed.
- The walls may be covered with a corrugated liner panel, or gypsum wall board with white FRP to 48" high. They should be painted Sherwin Williams #6225 Sleepy Blue.
- A web camera is required.
- You must install 4-6 pieces of the approved artwork.
- Electrical outlets installed in the training area must be GFI protected at least 48" above finished floor or have safety covers.
- Sound panels/baffles may be used, but they must be approved by Camp Bow Wow Support Center.
- Any furniture must be the approved log benches model #CF1223LCBW from Log Furniture Place.
- You must install an emergency supply box with supplies, provided by Joel Schmeichel at [joelschmeichel5858@gmail.com](mailto:joelschmeichel5858@gmail.com) or (989) 798-8319.

## Cabins

Camp Bow Wow® proprietary cabin system is called Scout's Camp Corral™. The use of crates to house dogs is a strict violation of Camp Bow Wow® policy. You may place a



crate provided by the Camper's parents inside the Camper's cabin, if it would make the Camper feel more at home, but only at the pet parent's instruction. The crate may not be stored at Camp while the Camper is not there. Cabin sizes are:

## Sizes

- **LARGE DOGS.** Large dog cabins are placed near the back of the Camp, with access to the largest play yard, and are 8'W x 6'L x 6'H.
- **MEDIUM DOGS.** Medium dog cabins will likely take up the majority of your cabin space. They are 4'W x 6'L x 6'H.
- **SMALL DOGS.** Small dog cabins cannot be more than 33% of the total number of cabins. These cabins are 4'W x 4'L x 6'H.

## Delivery

The cabins will arrive in a semi-truck, and you will need a forklift with 8' forks to unload them.



## Design and Layout



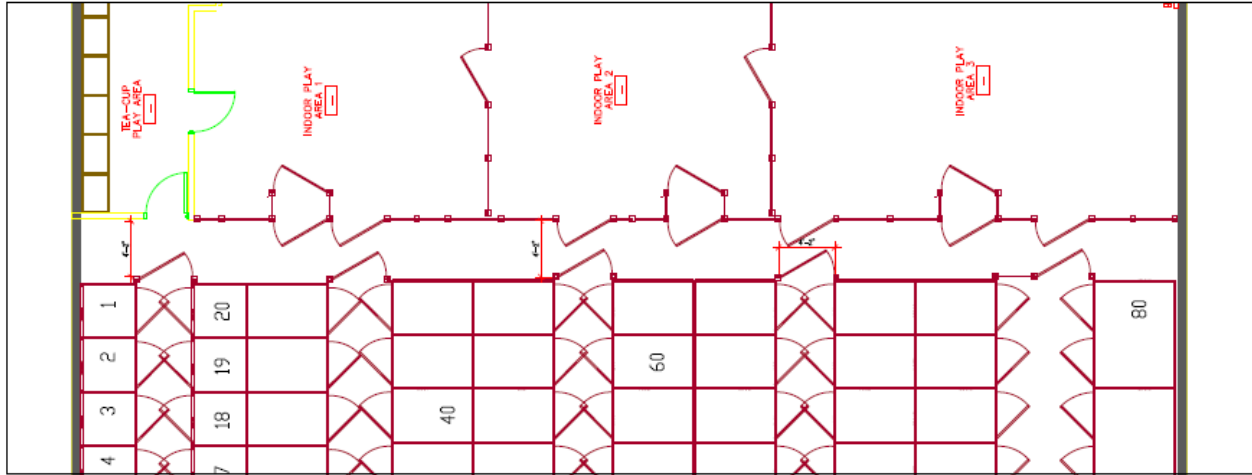
- The corridor between the play yards and fencing must be 50" wide, measured from center to center of the fence and cabin posts.
- Corridors between cabins must be 4'0" wide, but 4'2" is preferred, measured from front of cabin door to front of cabin door. Cabins are arranged back-to-back for maximum occupancy, space efficiency and optimal operational flow.
- Any gap greater than 3" is not acceptable in the fencing or Cabins, and must be closed off.
- Any exit doors from the Camp Grounds area that lead outside to an unsecured area must be locked, or have a Detex V40xEE delayed egress device installed.



- Any public view windows or doors with glass in the boarding area must have privacy film installed.

## Play Yards

**INDOOR PLAY YARDS.** Indoor play yards should be divided into a minimum of 3 separate yards, with 4 being ideal. Each play yard should be roughly 25' x 25' in size, with a 50" corridor between the cabins and the interior play yards. Gates should align directly across from each other. Each gate swings 180 degrees. This "4-way gate system" allows all dogs in a cabin row to enter a play yard.



## Fencing

The interior fencing is 5' tall and comes in standard panels 4' long with 4' posts on center. The panels are installed directly in between the vertical posts which are bolted to the concrete floor with 3/8" x 3 3/4" galvanized screw anchors.



## Supplies

Each indoor play yard must contain:

- An approved emergency supply mailbox, painted brick red, provided by Joel Schmeichel at joelschmeichel5858@gmail.com or (989) 798-8319. Installed on the wall at 5' high, measured from top of the box to the floor, containing the following supplies:
- Spray Shield brand animal deterrent.
- Rope: Two 50" long pieces of twisted poly.
- Pruning shears.
- Leather gloves.
- Air horn.
- Whistle.



- A garden hose reel and hose bib at 5' high. To order Macnaught reels, please contact Chuck Busk at: 813-628-5506 or via e-mail at [chuck.busk@macnaughtusa.com](mailto:chuck.busk@macnaughtusa.com). To order Eley Hose reels, the website is [www.eleyhosereels.com](http://www.eleyhosereels.com).



Macnaught



Perpendicular  
Configuration



Parallel  
Configuration

Eley

# CAMP BOW WOW®

- An approved CBW spray bottle holder mounted on the fence near the gate from the center aisle into the play yard; provided by Joel Schmeichel at joelschmeichel5858@gmail.com or (989) 798-8319
- A web camera at 6' high;
- A Stainless steel water bowl at minimum;
- 1 evacuation map at 7' high in approved black frame with NO GLASS;
- One set of Puppy Play Ground equipment ramp and stairs (2 pieces = 1 set; Large dog yards only – Teacup and small dog yards require the 12" tall Puppy Play Go); and,
- 2 pieces = 1 set.
- Each set must be assembled with the connecting bracket provided. Can be indoors or outdoors.
- CBW Green and Red (specific to CBW) are the only approved colors. Each set must be a matching color.
- To order, please contact Gary Bessette at 888-828-3416 or via e-mail at [puppyplayground@bellsouth.net](mailto:puppyplayground@bellsouth.net).
- Keep in mind that no cots, mats or toys (except Best Balls) are allowed in the playyards!





## Outdoor Play Yards

Outdoor play yards should mirror the indoor play yards.



### SPECIFICATIONS

- Sizes are determined by the size of the Camp. Camps with up to 45 cabins should have 1500 sq. ft. of outdoor space. Camps with more than 45 cabins should have approximately 2000 sq. ft. of outdoor space.
- Lighting should illuminate the entire outdoor play yard space.
- Any gate allowing an exit from the exterior play yard area to a public area should be double gated so a Camper doesn't follow a counselor out of the play yards. A 5' square enclosure called a "Security Cage" must be built around the exit gate.
- Yards must have artificial turf in the outdoor play yards, if your municipality allows it and your Camp is a new build. If your Camp is older, you must install artificial turf by the later or renewal or by 2020, but you may have a minimum of 6" of washed 3/8" pea gravel until that deadline. No gravel with fines (sand) or fractured faces is permitted. A 3'x5' rubber mat should be placed outside the doors leading into the play yards to help keep pea gravel from coming inside the Camp.



## PERIMETER FENCING

*Note:* Chain-link fencing is not permitted in new Camp locations

PVC White "Lakeland G Privacy Fence" for your perimeter fencing, from Country Estates, with 5" deep flange post caps. You may also choose to install the 8' high "almond" color (upon landlord direction).



- Reinforced per manufacturer's recommendations for high wind applications.
- 75" post centers, mid rail and heavy wall (0.280" wall) posts.
- Screws are added to sections for securing every other vertical into the rails as in 6" HVHZ rates styles.
- 4'X8' gate for perimeter exterior fence with multi adjust hinge sets, spring loaded and self-closing.
- Gate hardware: Black "Lokk Latch" brand deluxe, key lockable latches with (2) additional 9" stainless steel black pull handles on each side. Push button must be installed on the HINGE SIDE-Install hardware as shown- this is so dogs cannot operate the gates.
- Furnish and Install 1x6 synthetic PVC board at inside perimeter fence line to match fence material. This is to fill any gap between the bottom panel of the fence and the artificial turf or gravel and to prevent dogs from being able to dig under the fencing. The gap between the bottom of the fence panel and the finished grade should not exceed 1". Rack the fence panels as required to follow the grade.



### *DIVIDING FENCE RUNS.*

If you choose the PVC option, your dividing fencing should be the almond or white color 8' tall Country Estates brand Montauk G Fence with space pickets in the upper half and 5" deep flange post caps.



- Furnish and install 3'x7' Gates with hinges and hardware to match gates on 8' Perimeter Fence.
- Pickets in the lower section should be 7" tongue and groove. The upper section of pickets should be 1 1/2" x 1 1/2" space pickets—for visibility—gaps between pickets should not be more than 2 1/2".
- Furnish and Install 1x6 synthetic PVC board at inside perimeter fence line to match fence material. This is to fill any gap between the bottom panel of the fence and the artificial turf or gravel and to prevent dogs from being able to dig under the fencing.
- If gravel is used in the play yards, an additional deck board is required under each gate (flush with the top of the gravel) to prevent dogs from digging under each gate.
- Any fencing that does not meet these requirements must be approved by CBW. Manufacturer's specifications for the PVC fencing are available upon request.

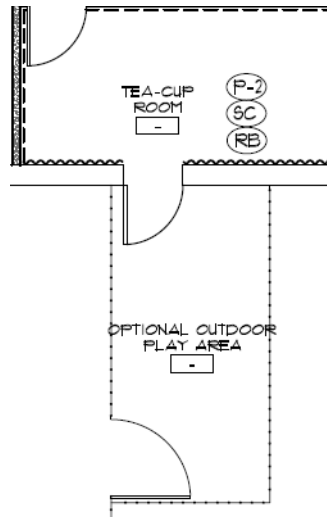
### *SUPPLIES*

Each outdoor play yard must contain:

- 1 beige "Coolaroo Shade Sail" mounted to the fencing;
- 1 hose reel and hose bib at 5' high;
- 1 web camera mounted at 96" high; and,
- Optional: A minimum of 1 bone pool and 1 paw pool during the summer months (can be rotated in all yards).

## INDOOR/OUTDOOR TEACUP YARDS.

Some Camps may have a small indoor or outdoor play yard just for Teacups. These play yards are required for dogs under 15lbs.



**SPECIFICATIONS.** There should be no gaps larger than  $\frac{3}{4}$ " in these play yards. These play yards can be detached from the outdoor play yards, but they are required to have a Potty Park or other approved synthetic grass system.

- Potty Park needs to be replaced periodically, and you should follow the manufacturer's cleaning recommendations.
- You are required to purchase two full systems so you can rotate them for cleaning and daily use. One must be in the room while Campers are outside of their boarding cabins at all times.

**SUPPLIES.** Each teacup play yard must contain:

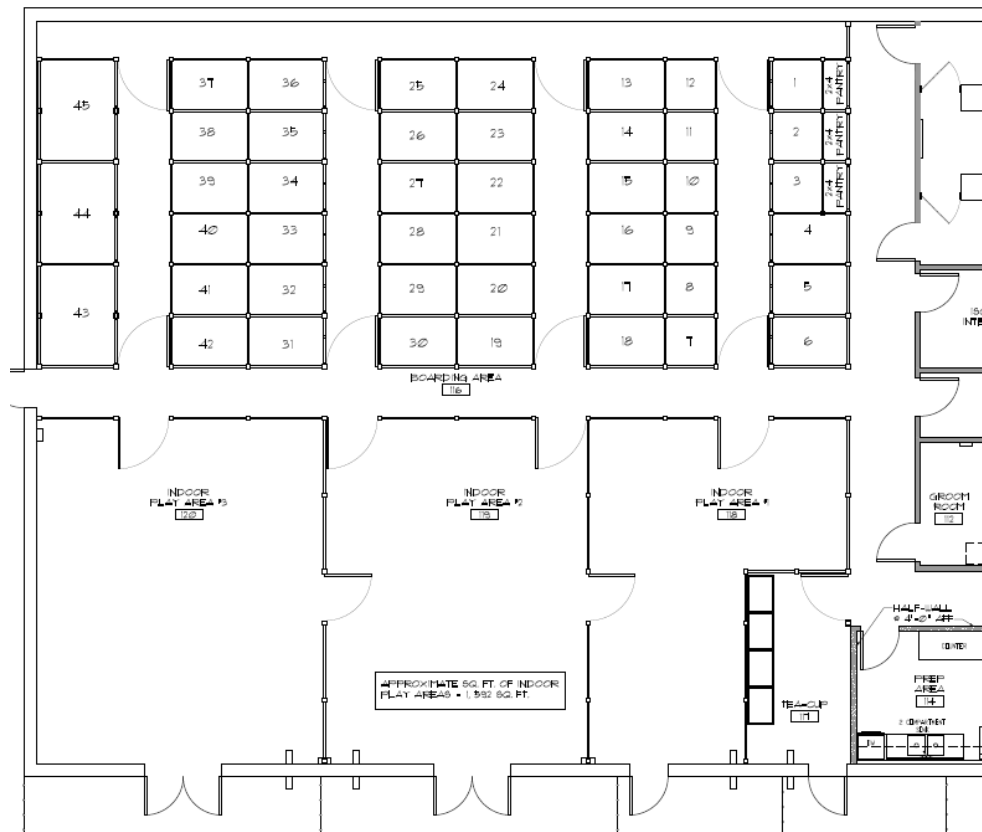
- 1 beige "Coolaroo Shade Sail" mounted to the fencing.
- 1 piece of Puppy Play Go equipment with a 12" maximum height from Puppy Play Ground (only toy-sized bridges are approved, which are 40"L x 29"W x 12"H).



- 1 web camera mounted at 6' high.
- If you choose to have cots in the room, you must use toy-sized (18" x 25") Kuranda cots in green or red as used in the rest of Camp.

## Camp Grounds

The "Camp Grounds" refers to the entire back of Camp area. The standard floor plan is provided below.



- The size of the Camp Grounds is determined by the balance of the space remaining in the building after the required rooms have been built.
- The doors from the reception area to the Camp Grounds must have 16"x34" windows in the upper half and must be self-closing.
- The walls should be corrugated galvanized steel panels. The approved paint color for drywall and masonry walls is Sherwin Williams #6225 Sleepy Blue. No murals are allowed.
- The floor must be clean, clear sealed concrete. 3000 grit polished concrete is an acceptable upgrade to clear concrete sealer.
- The ceilings are usually open to the roof.
- Electrical outlets installed in the boarding area must be at least 60" high and GFI protected.
- Sound panels/baffles may be used, but they must be white in color and approved by us. To order, please contact Frank Tropea at Noise Master Corporation at (800) 445-0034.
- Two 5'x 4' dry erase boards mounted at 6' 6" to the top must be mounted on the demising wall in the boarding area. One should be labeled "Boarding" and the other "Day Camp," both with log trim around the edges and containing the approved graphics. To order the trim, please contact Joel Schmeichel at joelschmeichel5858@gmail.com or (989) 798-8319.
- The doors leading from the interior play yards to exterior play yards must be securable in the open position with a chain and hook. They must have automatic door closers and 8" wide, .080" thick, clear PVC refrigeration strips with 50% overlap to minimize the loss of



heating and cooling. The strips must cover the entire door opening. PVC Strips are available in bulk rolls or pre-cut strips at [www.pvcstrip.com](http://www.pvcstrip.com) or (888) 303-8515.

## Required Finishes

### Paint Colors

- Lobby. Sherwin Williams #6164 Svelte Sage in satin finish
- Camp Grounds. Sherwin Williams #6225 Sleepy Blue in semi-gloss finish
- Door Trim. Sherwin Williams #6068 Brevity Brown-DTM Acrylic Industrial Enamel in semi-gloss finish.

### FRP

The color must be Almond (pebble finish) when installed on walls with Sherwin Williams Svelte Sage #6164, and White (pebble finish) when installed on walls with Sherwin Williams Sleepy Blue #6225. Please note that exact shades vary by brand, so if you are trying to match FRP previously installed at your Camp, Camp Bow Wow® suggests that you bring a sample of it to your supplier for color matching.

### Corrugated Steel

Corrugated steel must be 26 ga 2.67" x 7/8" corrugated, in the color G-90 Galvanized. There are 8' and 3' tall sheets available from MCBI. Trim pieces are required, so contact your Operations Liaison for more information.

### Base Trim

For most areas in your Camp, your base trim will be 1" x 5.5" composite decking square edge, which you can order from Veranda ArmorGuard Composite Decking in Brazilian Walnut or Brown.

- Rubber Cove Base. Used in areas where dogs are not present, such as offices, restrooms, break rooms, etc., this base should be the Roppe Pinnacle Rubber Base in 4" Toffee color.
- Quarry Tile Base. Used in wet areas, such as the prep room and groom room, this base should be 6" Dal-Tile Diablo Red 0T01 abrasive grain.

## Decor

### Window Treatments

All window treatments must be Bali 2" Faux Wood Blinds in the approved color, Natural 5007. Bali blinds are available from a number of retailers. To order, please visit [http://www.baliblinds.com/buy\\_bali/WhereToBuy.jsp](http://www.baliblinds.com/buy_bali/WhereToBuy.jsp).



Approved Color



Natural  
5007

### Wall Art

Once you log into the Camp Bow Wow® account with Frames Plus, simply enter the product code of the desired piece in the search bar. You can find a current selection of search codes and approved images on the following pages.

- Remember, black frames are required for all licenses, display certificates, awards from us, evacuation maps (NO glass), and your eight 8x10 lobby photos. Frames in the Camp Grounds should have no glass for camper safety. To order them without glass, type in "SF#42" on the Frames Plus website.
- As a quick reference guide, art is required in the following quantities: lobby (4-6); interview room (2); each public restroom (2); tea cup room (2); Ol' Camper Corral (2); training room (4); prep area/break area (optional); office (optional). All images are © 2010 FramesPlus Inc.:

RS123 ACE



RS105 Birdie



RS109 Squirt



RS128 RED



RS110 Tanner



RS106 Heart and Soul



[RS121 MIRROR MIRROR](#)



[RS100 DITTO](#)



[RS96 NANUK](#)



[RS118 FELIX](#)



[RS99 DAISY](#)



[RS102 LOYAL](#)



[RS116 Tug](#)



[RS103 WILT](#)



[RS108 Salty](#)



[RS94 BLUE](#)



[RS81 Sawyer](#)



[RS59 Spot](#)



[RS74 Jackson](#)



[RS89 Adrift](#)



[RS58 Shepard](#)



[RS71 Yardley](#)



[RS57 Oakley](#)



[RS55 Dewey](#)



[RS68 Twist](#)



[RS78 Salty Dog](#)



[RS53 Lewie & Clark Surfs Up](#)



[RS79 Tucker](#)



[RS54 Kelly](#)



[RS93 Homer](#)



[RS92 Grommet](#)



[RS44 Ollie](#)



[RS10 Splash](#)



[RS80 Scoop](#)



[RS42 Lolly](#)



[RS25 Finn](#)



[RS90 Archie](#)



[RS27 Obedience School](#)



[RS29 Rally](#)



[RS97 NICK](#)



[RS124 DUCKY](#)



[RS04 Pa an d Pea](#)



[RS41 Blaze](#)



[RS117 CHIP](#)



[RS51 Sandy](#)



[RS65 Tennis](#)



[RS36 Mud & Muck](#)



[RS21 Buster](#)



[RS37 Fetch](#)



[RS39 Sam](#)



[RS06 Woody](#)



[RS55 Lewie&Clark Out of the Park](#)



[RS88 Slim](#)



[RS11 Grace](#)



RS14 Jackfrost



RS09 Up Up & Away



RS28 Snow Day Lewie & Clark



RS86 Rover



RS43 Lewie & Clark Pause



RS87 Lewis & Clark - Hark!



RS62 Bandits



RS02 Laberjack



RS50 Stinky



RS120 MELODY



RS113 Dixie



RS91 Buzz



RS40 Posie



RS75 Special Treat



RS07 Honey



## Wall Murals

The murals pictured below are optional in the lobby but are required in each Camper luxury suite. To order, please contact Cathy O'Brien with Murals Your Way at [cathy@muralsyourway.com](mailto:cathy@muralsyourway.com) or via phone at (866) 308-6873.



CBW USA



OLD WEST



SOUTH DAKOTA



ON THE BEACH



AT THE PARK



## Lobby Mats

You should order two of each size mat, so you can use one set while the other is being cleaned. Mats can be ordered from Kevin Behnke at Aramark Uniform Services, via [kevin.behnke@uniform.aramark.com](mailto:kevin.behnke@uniform.aramark.com). Please allow 4-6 weeks for delivery. They will ship anywhere in the U.S. for \$25.



3x5 CBW Logo Mat -  
\$75 EA (min. 2)



4x6 CBW Logo Mat -  
\$120 EA (min. 2)

## Leash Holders

You must order at least one pine 48" x 6" leash holder, with bones of dry erase board material, to install just above the metal wainscot in the check-in and check-out area. Holders can be ordered from Joel Schmeichel at [joelschmeichel5858@gmail.com](mailto:joelschmeichel5858@gmail.com) or (989) 798-8319. The order form is available on the Dog House.





## Signage

### INDOOR SIGNAGE.

You must order the CBW logo medallion and the check-in and check-out signs from Joel Schmeichel at [jschmeichel5858@gmail.com](mailto:jschmeichel5858@gmail.com) or (989) 798-8319. The signs are each 18"W x 8"H and the medallion is 36" in diameter.

### FRONT DOOR SIGNAGE.

The graphic on your front door should be customized with your phone number and Camp hours. These hours are available directly from Same Day Signs. To order, call Curt Thomas at: (888) 322-7446 or e-mail him at [reachus@samedaysign.net](mailto:reachus@samedaysign.net). The hours should be posted in white vinyl lettering, but are shown here in black for reading purposes.



### BUILDING SIGNAGE.

Camp Bow Wow® uses raceway mounted internally illuminated channel letters and the Camp Bow Wow® logo for outdoor signage. The channel letters are white LED-covered with vinyl to match PMS 201, with black returns.

## Advertising Materials

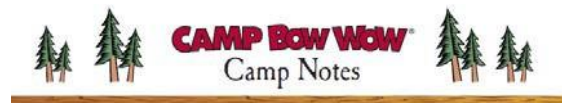
- The following items are required for display on the reception desk transaction counter:
- Promotional posters/flyers approved by CBW in clear acrylic frames;
- One 8" black digital picture frame to feature Camper pictures;
- One approved dog treat jar; and,
- Approved brochures, business cards, referral cards and holders for the counter.
- You must also have the approved bragger stand.



## Whiteboard Graphics

You can order graphics on their own, or you can order white boards with graphics pre-installed. To order the graphics on their own, please contact Same Day Signs at (888) 322-7446, [reachus@samedaysigns.net](mailto:reachus@samedaysigns.net), or order online at <http://www.samedaysignstore.net/store/scripts/prodList.asp?idCategory=85>.

To order complete white boards with approved wood trim and graphics, please contact Joel Schmeichel at [joelschmeichel5858@gmail.com](mailto:joelschmeichel5858@gmail.com) or (989) 798-8319. The approved graphics are:





## Holiday Décor

Please keep all holiday décor simple, tasteful and safe. Keep it premier! Décor can only be placed on or around the fireplace, on or around the two front log posts on the front counter, and on or around the exterior front entrance to the Camp (but not on the door). Please limit décor to 14 days before the holiday and remove it within 2 days after, except for Christmas, Hanukkah, and New Years' decorations, which you may install immediately after Thanksgiving and which you must remove by January 2.

## Mechanical, Electrical, TeleData and Security Requirements

### Mechanical Design Criteria

The back of the Camp and the Lobby /Office area are to have separate temperature control. Thermostats must be programmable with automatic change over from Heat to Cool.

- Outdoor Conditions: ASHREA 1% design temperature
- Indoor Conditions:
- Lobby/Reception, office area:
- 74degrees Fdb/50%RH Summer
- 70 degrees F db/205RH Winter
- Camp Ground Area Design Criteria:
- 75 degrees Fdb/60%RH Summer
- 68 degrees F db/20%RH Winter

### Electrical Requirements

You are required to have a minimum electrical service of 400AMP 120/240.

### Telephone and Data Requirements

You are required to have a telephone demarc and an Internet connection in your camp. Camp Bow Wow® requires you to have 3 phone lines: the 1st is for the main number at the Camp, the 2nd is for the roll-over number, in case the main number is busy and to act as a backup to the fire alarm number (line must be run through the fire panel first), and the 3rd is dedicated to the fire alarm. For data, the minimum optimal Internet speed is 3-5MBs Download/1.5MB upload speed. A static IP address is required from your Internet Service Provider. Your fax line may be run over the Internet or through your phone line.

### Lighting Requirements

Your lighting levels should be at 70 foot candles in the office area and 45 foot candles in the back of Camp.



## Security and Alarm Requirements

Camp Bow Wow® requires complete perimeter protection for safety, meaning all doors and windows must be alarmed. Doors require position switches, and motion sensors are preferred in the lobby and office area. Your local authority may require additional fire alarm notification devices as well. You must monitor your fire alarm and security systems. Phone backup is not required, but is strongly recommended.

- Carbon Monoxide detection is required in the back of Camp if the building has natural gas service.
- Smoke detection is required throughout the building.
- Your fire alarm must be tied into any Detex V40xEE delayed egress device.
- You must also install a Windland Mechanical Hi/low temperature sensor in a place that is visible in the back of the Camp and hanging at 48" high on the demising wall. The sensor must be visible on tours for the public and monitored by your security company. The sensor should be set for 64 degrees on the low end and 78 degrees on the high end at all times.

## Webcam System

You must install one camera in each indoor and outdoor play yard, lobby, teacup room, luxury suite and groom room.



- The lobby camera must be installed near the front door with a clear view of the lobby desk transaction counter and wood logo disc when possible.
- The web camera system must be acquired through a CBW approved web cam provider and meet current tech specifications. All cable, cameras, server and accessories are provided by the vendor and installed by a local contractor.
- Views of all web cameras should be displayed on a flat screen TV (42" or larger) monitor mounted at 6' high in the lobby, above the fire place.
- The "Pupdates" Messaging system requires TV monitors to be installed at 9' high in the back of Camp area.
- Typical web camera mounting height is 96" and the lobby camera is attached to the ceiling with a full view of the lobby.
- The web camera server requires a dedicated circuit, battery back-up and an Internet connection. Optimal Internet speeds are at least 3-5MBs Download/1.5 MBs Upload speed. Static IP address from ISP (Internet service provider).



## 2020 MODERNIZATION REQUIREMENTS

By the later of renewal or January 1, 2020, each Camp is required to comply with the following modernization requirements:

Due Date	Item	Specifics
1/1/2016	Web Cam System	Install PB&J Web Camera System
1/1/2020	Camp Grounds Wall Color	Paint Camp Grounds Walls Sleepy Blue (Sherwin Williams 6225) Some surfaces are exempt. If your Camp Grounds are not currently painted Nomadic Desert or you want to know if your surface is exempt, please contact Operations for guidance.
1/1/2020	Camp Grounds Wall Treatment	Install Camp Grounds Wall Treatments Option 1: Galvanized Steel Panels (4' high or 8' high panels available, but the 4' height is only available in extenuating circumstances upon approval)  Option 2: Blend of Agri-panel FRP and Galvanized Metal (Agri-panel FRP on bottom 4' of wall and Galvanized Steel on top 4' of wall)  Option 3 (CURRENTLY IN TESTING): Acrolon 218 Silver Paint for concrete block buildings only. This is currently being tested, and it may or may not be incorporated as an approved option based on durability and aestheticstesting.
1/1/2020	Outdoor Play Yard Surface	Install Perfect Turf K9 Grass in outdoor play yards Check with your local municipality to make sure this complies with local regulations. If it does not, please contact Operations for guidance.
1/1/2020	Back of House Flooring	Install Diamond-Ground Concrete flooring when CBW deemsexisting floorsinunacceptablecondition If your floors are deemed unacceptable, you must comply with this standard within 6 months.
1/1/2020	Puppy Playground Equipment	Replace non-standard colors when CBW deems existing equipment in unacceptable condition If your play equipment is deemed unacceptable, you must comply with this standard within CBW's required timeframe.



1/1/2020	Sound Baffles	Sound baffles are optional, but if used they must be white and purchased from the approved vendor. All non-approved sound baffles, carpet squares, etc. must be removed by 1/1/2020
Optional	Scout's Camper Corral System	Optional, but strongly recommended
Optional	Fencing Changes & Expansion	Restrictions apply