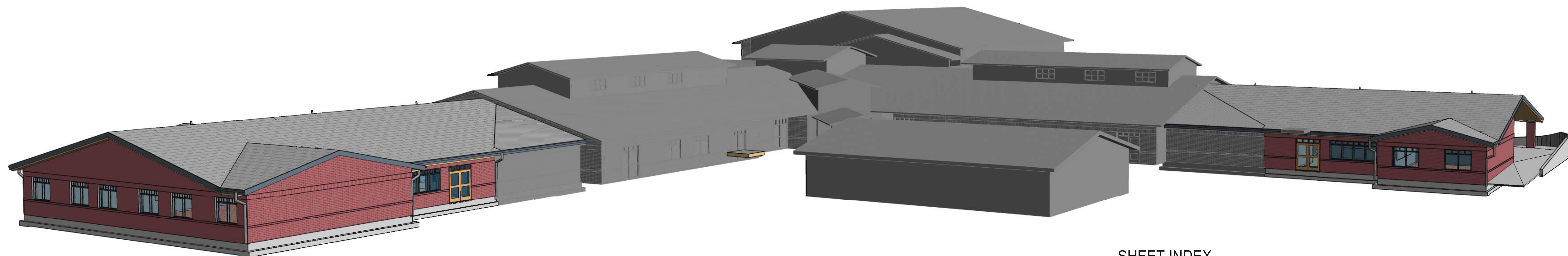


# FRANKLIN ELEMENTARY SCHOOL ADDITION

## VANCOUVER SCHOOL DISTRICT #37

### BID SET -- AUGUST 19TH, 2019



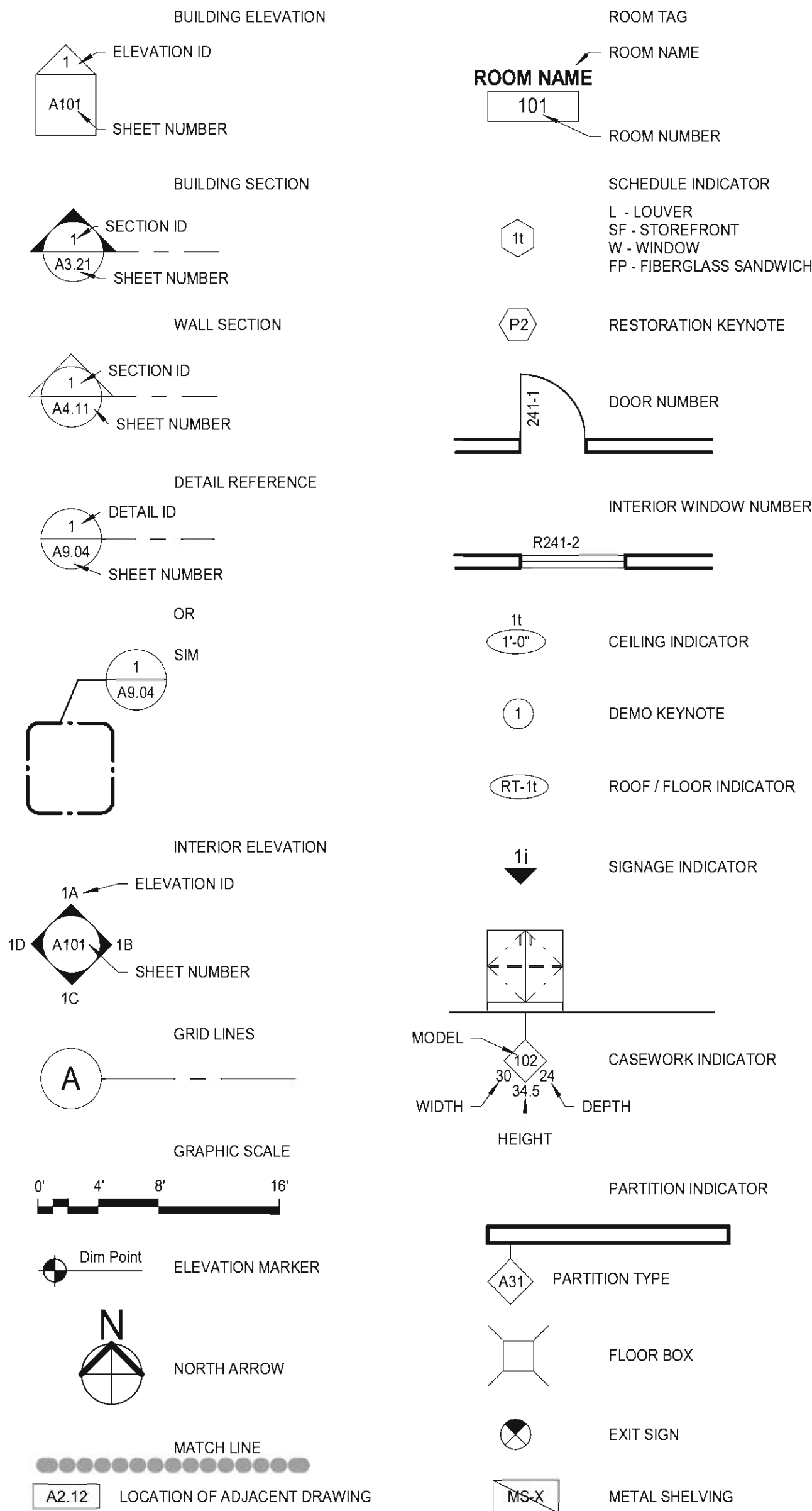
#### GENERAL NOTES

- VERIFY AND COORDINATE SITE CONDITIONS, EXISTING BUILDING CONDITIONS, AND DIMENSIONS. BRING INCONSISTENCIES TO ATTENTION OF ARCHITECT BEFORE PROCEEDING WITH WORK.
- IMMEDIATELY BRING INCONSISTENCIES, ERRORS AND OMISSIONS FOUND IN THE DRAWINGS AND SPECIFICATIONS TO ATTENTION OF ARCHITECT.
- DO NOT SCALE DRAWINGS. COORDINATE DIMENSIONS SHOWN ON DRAWINGS WITH ACTUAL FIELD MEASUREMENTS. NOTIFY ARCHITECT OF DISCREPANCIES.
- ALL DIMENSIONS ARE TO FACE OF STUD. FACE OF CONCRETE AND NOMINAL FACE OF MASONRY, AND CENTERLINE OF COLUMNS, UNLESS NOTED OTHERWISE.
- WORK INSTALLED IN CONFLICT WITH CONSTRUCTION DOCUMENTS WILL BE CONSIDERED IN NON-CONFORMANCE AND SHALL BE CORRECTED AT NO EXPENSE TO OWNER OR ARCHITECT.
- COORDINATION: COORDINATE WORK TO COMPLY WITH DRAWINGS AND SPECIFICATIONS, INCLUDING MECHANICAL, ELECTRICAL, EQUIPMENT AND OTHER CONSTRUCTION.
- FOLLOW MANUFACTURER'S INSTRUCTIONS, EXCEPT WHERE MORE STRINGENT REQUIREMENTS ARE INDICATED OR REQUIRED BY CONSTRUCTION DOCUMENTS OR APPLICABLE CODES, ORDINANCES AND REGULATIONS.
- PROVIDE AND INSTALL SOLID BLOCKING OR BACKING FOR ALL WALL AND CEILING MOUNTED ITEMS.
- PROVIDE INTERMEDIATE ROD AND SHELF SUPPORTS FOR SPANS EXCEEDING 36".
- INSTALL OUTLETS, SWITCHES AND OTHER RECESSED ITEMS AT FIRE RATED WALLS IN ACCORDANCE WITH I.B.C.
- INSTALL GYPSUM BOARD, OR OTHER SHEATHING OR BACKER BOARD AS SCHEDULED OR INDICATED, ON BOTH SIDES OF WALL FRAMING UNINTERRUPTED FROM FLOOR TO UNDERSIDE OF FLOOR OR ROOF DECK, UNLESS NOTED OTHERWISE.
- ATTACH PIPING IN SOUND RATED WALLS WITH VIBRATION ISOLATORS. ISOLATE PIPING IN CONTACT WITH CONSTRUCTION.
- MOUNT ELECTRICAL WIRING DEVICES AND MECHANICAL TEMPERATURE SENSORS AT HEIGHTS PER SPECIFICATIONS. VERIFY SWITCH, OUTLET AND OTHER DEVICE HEIGHTS TO CLEAR CASEWORK, RADIATORS AND WALL MOUNTED ITEMS, INCLUDING BACK SPLASHES.
- ISOLATE AND OFFSET OUTLETS ONE STUD SPACE MINIMUM AT SOUND RATED WALLS TO PREVENT SOUND TRANSMISSION.
- COORDINATE SIZES AND LOCATIONS OF OPENINGS AND ROUGH-INS FOR MECHANICAL, ELECTRICAL AND OTHER EQUIPMENT WITH RELATED SUB-CONTRACTORS, AND SHOP DRAWINGS APPROVED BY THE ARCHITECT, BEFORE PROCEEDING WITH THE WORK.
- VERIFY SIZES AND LOCATIONS OF MECHANICAL AND ELECTRICAL EQUIPMENT PADS, CURBS, BASES, POWER, WATER AND DRAIN INSTALLATION WITH EQUIPMENT MANUFACTURERS BEFORE PROCEEDING WITH THE WORK. PROVIDE AND INSTALL SEISMIC BRACING & FASTENING IN ACCORDANCE WITH CODE REQUIREMENTS.
- COORDINATE EXACT LOCATION OF CONDUIT, PLUMBING AND PIPING WITH ELECTRICAL AND MECHANICAL SUBCONTRACTORS.
- EXIT DOORS: OPERABLE FROM INSIDE BUILDING WITHOUT USE OF KEY OR SPECIAL KNOWLEDGE OR EFFORT.
- EXIT SIGN LETTERS: SIX INCHES HIGH MINIMUM. CONFORM WITH APPLICABLE CODES.
- FINISHES: IN FINISHED INTERIOR AREAS: NO EXPOSED PIPE, CONDUITS, DUCTS, VENTS, ETC. UNLESS NOTED OTHERWISE. CONCEAL UTILITY LINES BEHIND FINISHED CONSTRUCTION UNLESS NOTED AS EXPOSED CONSTRUCTION ON DRAWINGS OR APPROVED BY ARCHITECT. IF AFOREMENTIONED WORK CANNOT BE CONCEALED WITHIN FINISHED CONSTRUCTION OF THE CONTRACT DOCUMENTS THE CONTRACTOR SHALL PROVIDE & INSTALL FURRED & FINISHED HORIZONTAL & VERTICAL CHASES TO MATCH ADJACENT FINISH TO CONCEAL WORK. COORDINATE WITH ARCHITECT.
- OFFSET AND ADJUST FRAMING TO MAKE FINISHED SURFACES FLUSH AND TRUE TO LINE.
- PROVIDE GALVANIZED ISOLATION BETWEEN DISSIMILAR METALS.
- ELECTRICAL PERMIT AND INSPECTION MUST BE OBTAINED THROUGH WASHINGTON STATE DEPARTMENT OF LABOR AND INDUSTRIES ELECTRICAL SECTION.
- CORNER GUARDS ARE SHOWN ON FINISH PLANS.

#### FIRE PROTECTION GENERAL NOTES

- FIRE EXTINGUISHER CABINETS, EXIT SIGNS, FIRE ALARM AND FIRE PROTECTION SYSTEM COMPONENTS SHALL BE LOCATED IN CONFORMANCE WITH CITY OF VANCOUVER FIRE DEPARTMENT AND OTHER REGULATORY REQUIREMENTS.
- PROVIDE AND INSTALL FIRE-RESISTIVE JOINT SYSTEMS, FIRE BLOCKS, DRAFT STOPS, AND FIRESTOP SYSTEMS IN ACCORDANCE WITH I.B.C.
- FIRE PROTECTION: PROVIDE AUTOMATIC FIRE SUPPRESSION SPRINKLER SYSTEM THROUGHOUT, IN ACCORDANCE WITH APPLICABLE CODES, REGULATIONS, AND ORDINANCES.
- SPRINKLER SYSTEM TO BE APPROVED BY CITY OF VANCOUVER FIRE DEPARTMENT AND OTHER REGULATORY AGENCIES PRIOR TO INSTALLATION. OBTAIN ARCHITECT'S APPROVAL OF FIRE PROTECTION DRAWINGS PRIOR TO SUBMITTAL FOR FIRE DEPARTMENT REVIEW.
- RUN FIRE PROTECTION MAIN LINES AND INSPECTOR TEST LINES OUT BEYOND BUILDING LINES. DO NOT DRAIN WATER ACROSS SIDEWALK OR OTHER CONCRETE SURFACES.
- PROVIDE DESIGN BUILD FIRE PROTECTION DRAWINGS AND ENGINEERING AS REQUIRED BY CONSTRUCTION DOCUMENTS AND CITY OF VANCOUVER FIRE DEPARTMENT.
- COORDINATE INSTALLATION OF FIRE PROTECTION SYSTEM WITH ARCHITECTURAL, STRUCTURAL, MECHANICAL, PLUMBING, ELECTRICAL AND OTHER WORK TO ENSURE NO CONFLICT AS A RESULT OF FIRE PROTECTION SYSTEM INSTALLATION.

#### GRAPHIC SYMBOLS



#### ARCHITECTURAL ABBREVIATIONS

ACP	ACOUSTICAL CEILING PANEL	L	LENGTH / ANGLE (AS STRUCTURAL SHAPE)
ACT	ACOUSTICAL CEILING TILE	LB	FOUND
AFF	ALUMINUM	LF	LINEAR FOOT
ALUM	ALUMINUM	MAX	MAXIMUM
APPROX	APPROXIMATE	MDF	MEDIUM DENSITY FIBERBOARD
AVE	AVENUE	MDO	MEDIUM DENSITY OVERLAY
AVG	AVERAGE	MFR	MANUFACTURER
BLDG	BUILDING	MISC	MISCELLANEOUS
BOT	BOTTOM	MO	MASONRY OPENING
C	AMERICAN STANDARD CHANNEL	MET	METAL
CF/CI	CONTRACTOR FURNISHED / CONTRACTOR INSTALLED	NA	NOT APPLICABLE
CF/OI	CONTRACTOR FURNISHED / OWNER INSTALLED	NIC	NOT IN CONTRACT
CPT	CARPET	NR	NON RATED
CG	CORNER GUARD	NTS	NOT TO SCALE
CJ	CONTROL JOINT	OC	ON CENTER
CL	CENTER LINE	OD	OUTSIDE DIAMETER
CMU	CONCRETE MASONRY UNIT	OF/CI	OWNER FURNISHED, CONTRACTOR INSTALLED
COL	COLUMN	OF/OI	OWNER FURNISHED, OWNER INSTALLED
CONC	CONCRETE	OPNG	OPENING
CT	CERAMIC TILE	OPP	OPPOSITE
DEPT	DEPARTMENT	OZ	OUNCE
DF	DRINKING FOUNTAIN	P	PAINT
DIA	DIAMETER	PERP	PERPENDICULAR
DIM	DIMENSION	PL	PLATE
DIM PT	DIMENSION POINT	PLAM	PLASTIC LAMINATE
DN	DOWN	PLYWD	PLYWOOD
DR	DOOR	PNL	PANEL
DW	DISHWASHER	PSF	POUNDS PER SQUARE FOOT
DWG	DRAWING	PSI	POUNDS PER SQUARE INCH
EA	EACH	RCR	REFLECTED CEILING PLAN
EL	ELEVATION	REBAR	REINFORCING BAR
ELEC	ELECTRIC	RM	ROOM
ELEV	ELEVATOR	RO	ROUGH OPENING
EQUIP	EQUIPMENT	ROW	RIGHT OF WAY
EXIST	EXISTING	SCHED	SCHEDULE
EXT	EXTERIOR	SF	SQUARE FEET
FA	FIRE ALARM	SHTG	SHEATHING
FD	FLOOR DRAIN	SIM	SIMILAR
FE	FIRE EXTINGUISHER	SPEC	SPECIFICATIONS
FEC	FIRE EXTINGUISHER CABINET	SST	STAINLESS STEEL
FOF	FACE OF FINISH	STC	SOUND TRANSMISSION CLASS
FOM	FACE OF MASONRY	STD	STANDARD
FOS	FACE OF STUDS	SUSP	SUSPENDED
FTG	FOOTING	T&G	TONGUE AND GROOVE
GA	GAUGE	TOC	TOP OF CURB / TOP OF CONCRETE
GC	GENERAL CONTRACTOR	TYP	TYPICAL
GWB	GYPSUM WALL BOARD	UL	UNDERWRITERS LABORATORIES
GYP	GYPSUM	UNO	UNLESS NOTED OTHERWISE
HWWD	HARDWOOD	VERT	VERTICAL
HM	HOLLOW METAL	VOL	VOLUME
HORIZ	HORIZONTAL	W/O	WITHOUT
ID	INSIDE DIAMETER	WO	WOOD
IN	INCHES	WDW	WINDOW
INT	INTERIOR	WT	WEIGHT
JT	JOINT		

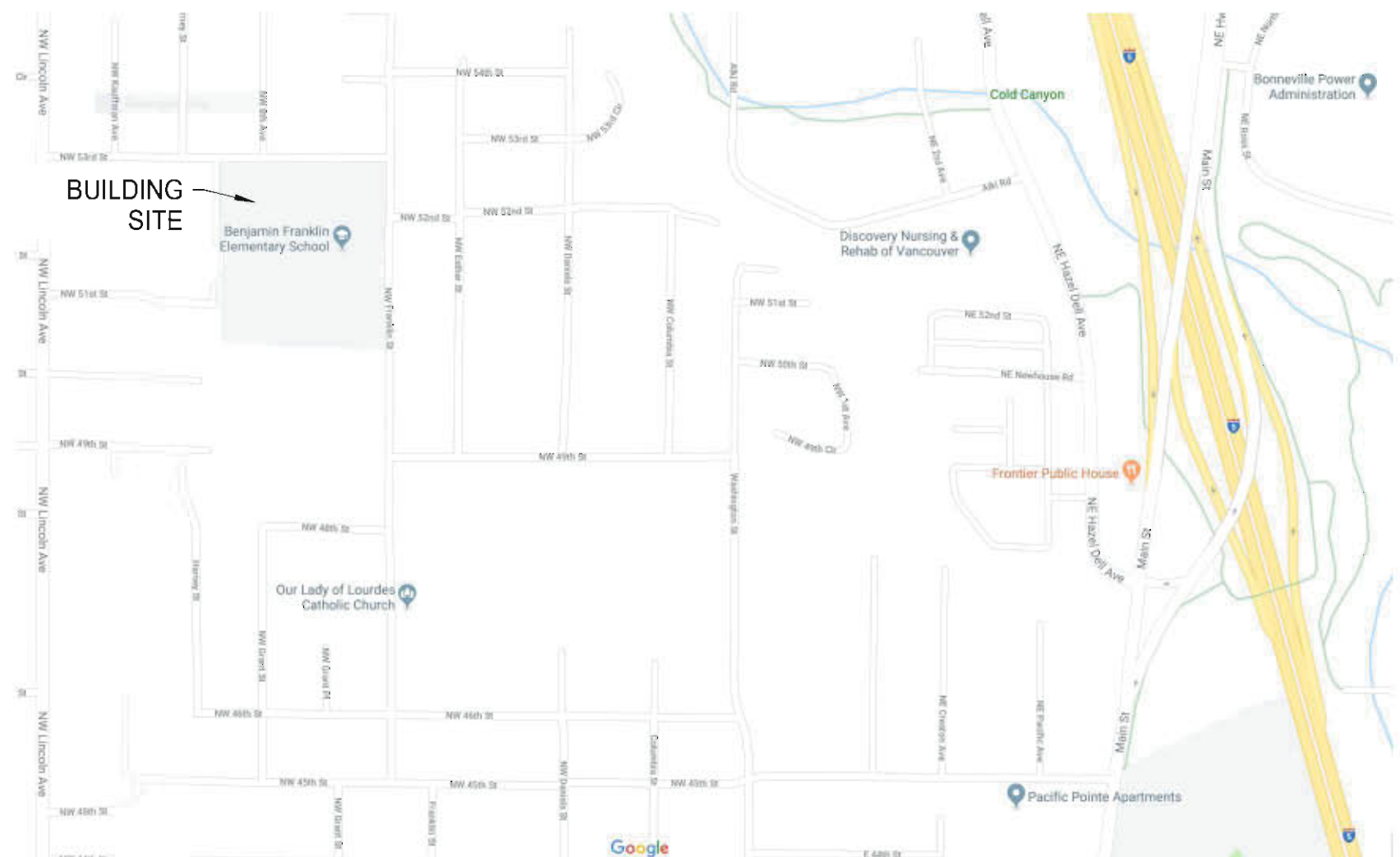
#### PROJECT DATA

PROJECT ADDRESS:	FRANKLIN ELEMENTARY SCHOOL 5206 FRANKLIN ST, VANCOUVER, WA 98663
OWNER:	VANCOUVER SCHOOL DISTRICT #37 2901 FALK RD. VANCOUVER, WA 98661 CONTACT: JENNIFER HALLECK, 360-313-1000
ARCHITECT OF RECORD:	BASSETTI ARCHITECTS 71 COLUMBIA ST., #501 SEATTLE, WA 98104 CONTACT: 206-340-9500
TAX PARCEL NO.:	37918110
JURISDICTION:	CITY OF VANCOUVER
FIRE DISTRICT:	VANCOUVER FD
SEWER DISTRICT:	VANCOUVER
WATER DISTRICT:	VANCOUVER
CODES:	2015 International Building Code w/ Washington Amendments - WAC 51-50 2015 International Mechanical Code w/ Washington Amendments - WAC 51-52 - rev. 10/1/17 2015 Uniform Plumbing Code w/ Washington Amendments - WAC 51-56 2017 National Electrical Code w/ Washington Amendments - effective July 1, 2017 2015 International Fuel Gas Code w/ Washington Amendments - WAC 51-52-21000 2015 International Fire Code w/ Washington Amendments - WAC 51-54A ICC/ANSI A117.1-2009 Accessibility w/ WAC 51-50-1101.2 2015 Washington State Energy Code - WAC 51-11 - rev. 10/1/17
PROPOSED USE:	EDUCATIONAL K - 5TH GRADE
OCCUPANCY:	GROUP E
TYPE OF CONSTRUCTION:	TYPE VB FULLY SPRINKLERED AND FIRE ALARMS

#### SHEET INDEX

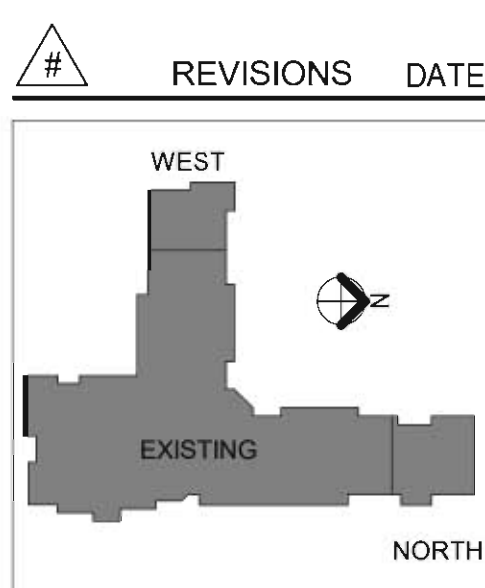
Sheet Number	Sheet Name	Sheet Number	Sheet Name
GENERAL		STRUCTURAL	
G0.01	COVER SHEET	S0.00	PERSPECTIVE VIEWS
G1.01	ARCHITECTURAL SITE PLAN	S0.01	GENERAL NOTES
G2.00	CODE ANALYSIS PLANS	S0.02	GENERAL NOTES
		S0.03	GENERAL NOTES
CIVIL		S2.01	FOUNDATION AND GRADE LEVEL FRAMING PLANS
C000	COVER SHEET	S2.02	ATTIC FRAMING PLANS
C001	LEGEND & NOTES	S2.03	ROOF FRAMING PLANS
C002	EXISTING CONDITIONS	S3.01	FOUNDATION DETAILS
C003	EXISTING CONDITIONS	S3.02	FOUNDATION DETAILS
C004	DEMOLITION PLAN	S4.01	WOOD FRAMING DETAILS
C100	SITE PLAN	S4.02	WOOD FRAMING DETAILS
C101	SITE SURFACING PLAN	S4.03	WOOD FRAMING DETAILS
C102	SITE DETAILS	S4.04	WOOD FRAMING DETAILS
C200	GRADING, E.C. & STORM PLAN	S4.05	WOOD FRAMING DETAILS
C201	GRADING ENLARGEMENT	S4.06	WOOD FRAMING DETAILS
C202	GRADING ENLARGEMENT		
C203	E.C. NOTES & DETAILS	MECHANICAL	
C204	STORM DRAINAGE DETAILS	M0.01	MECHANICAL LEGEND
C300	UTILITY PLAN	M0.02	MECHANICAL SCHEDULES I
C301	SANITARY SEWER PROFILES	M1.00	PLUMBING COMPOSITE FLOOR PLAN
C302	SANITARY & WATER PROFILES	M1.01	HVAC COMPOSITE FLOOR PLAN
C400	SIGNING AND STRIPING PLAN	M2.00	PLUMBING UNDERGROUND PLANS
L100	LEVEL II TREE, VEGETATION AND SOIL PLAN	M2.01	PLUMBING FIRST FLOOR PLANS
L200	PLANTING PLAN VALUE	M3.01	HVAC FLOOR PLANS
L300	PLANTING NOTES & DETAILS	M3.02	HVAC ATTIC PLANS
ARCHITECTURAL DEMOLITION		M4.01	ENLARGED PIPING PLAN
AD0.01	DEMOLITION FLOOR PLANS	M5.01	MECHANICAL DETAILS
AD0.02	DEMOLITION ROOF PLANS	M6.01	HYDRONIC DIAGRAM
		M7.01	CONTROLS AND SEQUENCE OF OPERATIONS I
		ND1.01	HVAC DEMOLITION FLOOR PLANS
ARCHITECTURAL		ELECTRICAL	
A1.00	COMPOSITE FLOOR PLAN	E0.01	ELECTRICAL LEGEND
A2.01	FLOOR PLANS	E0.02	LIGHTING FIXTURE SCHEDULE
A2.03	OVERALL ROOF PLAN	E0.03	LIGHTING CONTROL DIAGRAMS
A2.04	ROOF PLANS	E1.01	ELECTRICAL SITE PLAN
A3.01	OVERALL BUILDING ELEVATIONS & SECTIONS	E1.02	SYSTEMS OVERALL FLOOR PLAN
A3.11	BUILDING ELEVATIONS	E2.01	LIGHTING REFLECTED CEILING PLANS
A3.22	NORTH ADDITION BUILDING SECTIONS	E2.11	LIGHTING REFLECTED MEZZANINE PLANS
A4.01	WEST ADDITION WALL SECTIONS	E3.01	POWER FLOOR PLANS
A4.03	WEST ADDITION WALL SECTIONS	E3.11	POWER FLOOR MEZZANINE PLANS
A5.10	DOOR, WINDOWS, FRAMES, TYPES AND SCHEDULES	E3.12	ENLARGED ELECTRICAL PLANS
A5.11	DOOR AND WINDOW DETAILS	E4.01	SYSTEMS FLOOR PLANS
A5.31	EXTERIOR DETAILS	E5.01	ELECTRICAL ONE-LINE DIAGRAM
A5.32	ROOF DETAILS	E5.11	PANEL SCHEDULES
A6.11	ENLARGED TOILET PLANS AND ELEVATIONS	E6.12	PANEL SCHEDULES
A7.01	INTERIOR ELEVATIONS	E6.13	PANEL SCHEDULES
A7.02	INTERIOR ELEVATIONS & CASEWORK TYPE	E7.01	ELECTRICAL DETAILS
A8.01	REFLECTED CEILING PLAN	E7.02	SYSTEMS DETAILS
A9.10	WALL, PARTITION, ROOF AND CEILINGS TYPES	E8.01	POWER DEMOLITION PLANS
A10.00	SIGNAGE DETAILS & SCHEDULE	E8.01	SYSTEM DEMOLITION PLANS

#### VICINITY MAP





#	REVISIONS	DATE



Vancouver School District  
**FRANKLIN  
ELEMENTARY  
SCHOOL  
ADDITION**

5206 NW Franklin St.  
Vancouver, WA 98663

JOB NO: 1806  
ISSUE DATE: 08/19/2019

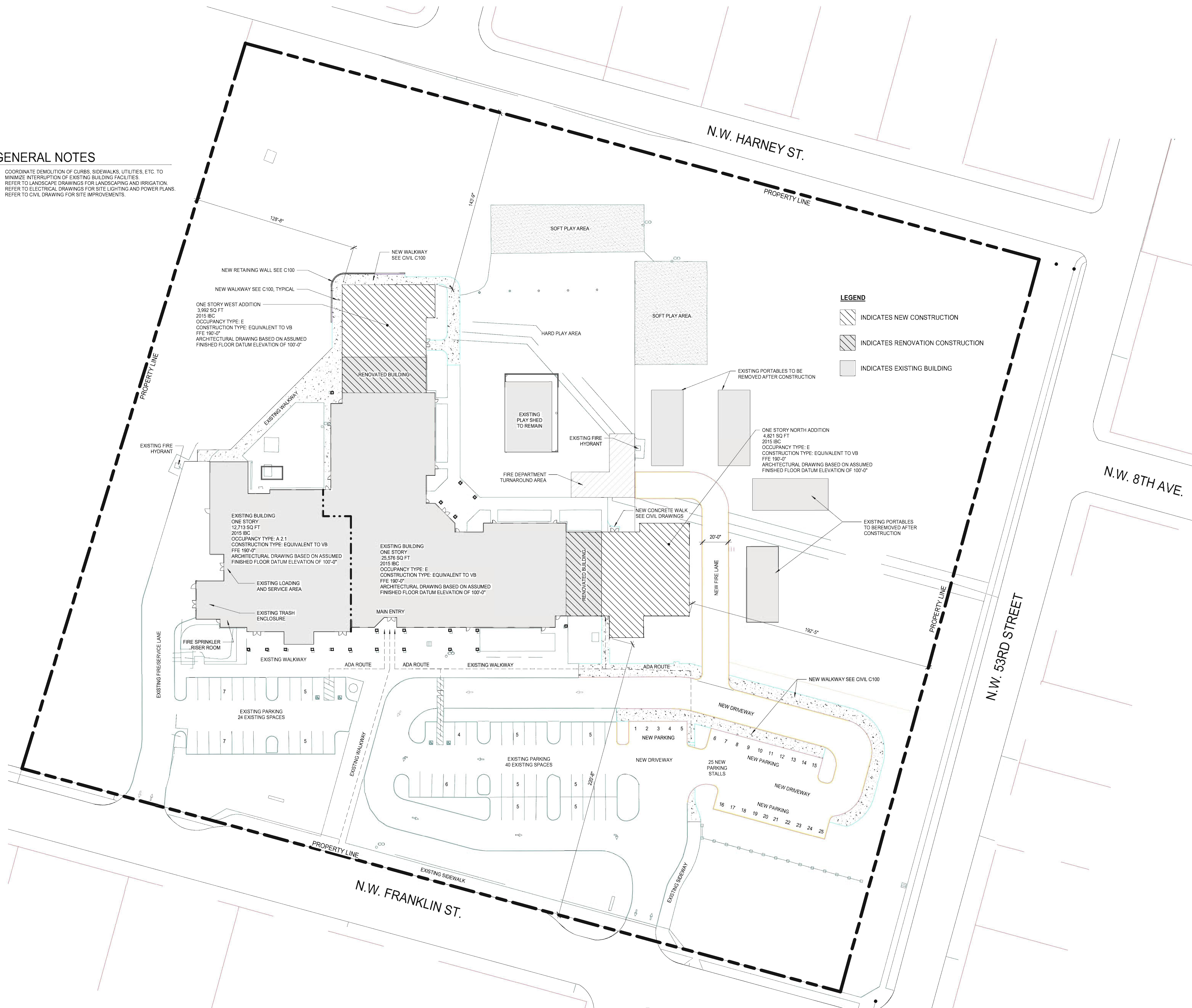
Stamp Area

**ARCHITECTURAL  
SITE PLAN**

G1.01

**GENERAL NOTES**

1. COORDINATE DEMOLITION OF CURBS, SIDEWALKS, UTILITIES, ETC. TO MINIMIZE INTERRUPTION OF EXISTING BUILDING FACILITIES.
2. REFER TO LANDSCAPE DRAWINGS FOR LANDSCAPING AND IRRIGATION.
3. REFER TO ELECTRICAL DRAWINGS FOR SITE LIGHTING AND POWER PLANS.
4. REFER TO CIVIL DRAWING FOR SITE IMPROVEMENTS.



**1 SITE PLAN**  
1" = 30'-0"



G2.00