

DAVID DOUGLAS SCHOOL DISTRICT  
DAVID DOUGLAS HIGH SCHOOL KILT KITCHEN REMODEL  
18039.00.L

**ADDENDUM NO. TWO (2)**  
**PAGE 1 OF 2 (PLUS ATTACHMENTS)**

**08 MARCH 2019**

THE FOLLOWING CHANGES, ADDITIONS, AND DELETIONS TO THE CONTRACT DOCUMENTS DATED 21 FEBRUARY 2019 HEREBY BECOME A PART OF THE CONTRACT DOCUMENTS.

NOTIFY ALL SUBCONTRACTORS AFFECTED BY THIS ADDENDUM.

**BID SUBMITTAL DEADLINE**

The bid submittal deadline has **NOT** been extended or changed by this Addendum.

**SPECIFICATIONS**

1. Section 08 71 00, DOOR HARDWARE; Paragraph 3.4; add the following hardware groups at the end of the section.

HW SET: 01

FOR USE ON DOOR #(S): 157B

EACH OPENING TO HAVE:

QTY		DESCRIPTION/CATALOG NUMBER	FINISH	MFR
3	EA	HINGE/5BB1 4.5 X 4.5 NRP	652	IVE
1	EA	CLASSROOM LOCK/ND70TD SPA	626	SCH
1	EA	FSIC CORE/23-030 COORDINATE KEYWAY WITH DISTRICT	626	SCH
1	EA	SURFACE CLOSER/4111 EDA WMS	689	LCN
1	EA	KICK PLATE/8400 10" X 2" LDW B-CS	630	IVE
1	EA	WALL STOP/HOLDER/WS40 INSTALL AT TOP OF DOOR	626	IVE
3	EA	SILENCER/SR64	GRY	IVE

HW SET: 02

FOR USE ON DOOR #(S): 157C

EACH OPENING TO HAVE:

QTY		DESCRIPTION/CATALOG NUMBER	FINISH	MFR
1	EA	CLASSROOM LOCK/ND70TD SPA	626	SCH
1	EA	FSIC CORE/23-030 COORDINATE KEYWAY WITH DISTRICT	626	SCH
		BALANCE OF EXISTING HARDWARE TO REMAIN		

HW SET: 03

FOR USE ON DOOR #(S): 157E

EACH OPENING TO HAVE:

QTY		DESCRIPTION/CATALOG NUMBER	FINISH	MFR
3	EA	HINGE/5BB1 4.5 X 4.5 NRP	652	IVE
1	EA	STOREROOM LOCK/ND80TD SPA	626	SCH
1	EA	FSIC CORE/23-030 COORDINATE KEYWAY WITH DISTRICT	626	SCH
1	EA	WALL STOP/WS406/407CVX	630	IVE
3	EA	SILENCER/SR64	GRY	IVE

DAVID DOUGLAS SCHOOL DISTRICT  
DAVID DOUGLAS HIGH SCHOOL KILT KITCHEN REMODEL  
18039.00.L

**ADDENDUM NO. TWO (2)**  
**PAGE 2 OF 2 (PLUS ATTACHMENTS)**

**08 MARCH 2019**

HW SET: 04

FOR USE ON DOOR #(S): 157F

EACH OPENING TO HAVE:

QTY		DESCRIPTION/CATALOG NUMBER	FINISH	MFR
3	EA	HINGE/5BB1 4.5 X 4.5 NRP	652	IVE
1	EA	STOREROOM LOCK/ND80TD SPA	626	SCH
1	EA	FSIC CORE/23-030 COORDINATE KEYWAY WITH DISTRICT	626	SCH
1	EA	WALL STOP/WS406/407CVX	630	IVE
1	EA	GASKETING/8193AA-S	AA	ZER
1	EA	DOOR SWEEP/8193AA	AA	ZER
1	EA	THRESHOLD/544A-223	A	ZER

BRUSH SEALS, SWEEP, & THRESHOLD USED FOR RODENT CONTROL.

2. Section 09 67 23, URETHANE RESINOUS FLOORING; 3.2 SURFACE PREPARATION; Paragraph A; Sub Paragraph 3; add the following Sub-subparagraph e:
  - e. Areas of the existing floor coating that are intact may be abraded to the base material with a diamond grinder. Recoat the base material with aggregate and top coat as required for the new areas.

**DRAWINGS**

1. Sheet A1.4, FLOOR PLAN REFLECTED CEILING PLAN; revise Detail 2 per the attached Drawing ARA-1.
2. Sheet A4.1, replace the sheet with the revised sheet dated 06 MAR 2019 (The scale of detail 4 is corrected to not overlap the adjacent details.
3. Sheet A5.3, DETAILS; replace Detail 1 with the detail shown in the attached Drawing ARA-2
4. Replace the following sheets with the revised sheets dated 07 MAR 2019:
  - a. Sheet E1.2, ENLARGED KITCHEN NEW FLOOR PLAN-LIGHTING
  - b. Sheet E1.3, ENLARGED KITCHEN NEW FLOOR PLAN-EGRESS PHOTOMETRICS

**ATTACHMENTS TO THIS ADDENDUM**

Drawing ARA-1, dated 7 MAR 2019

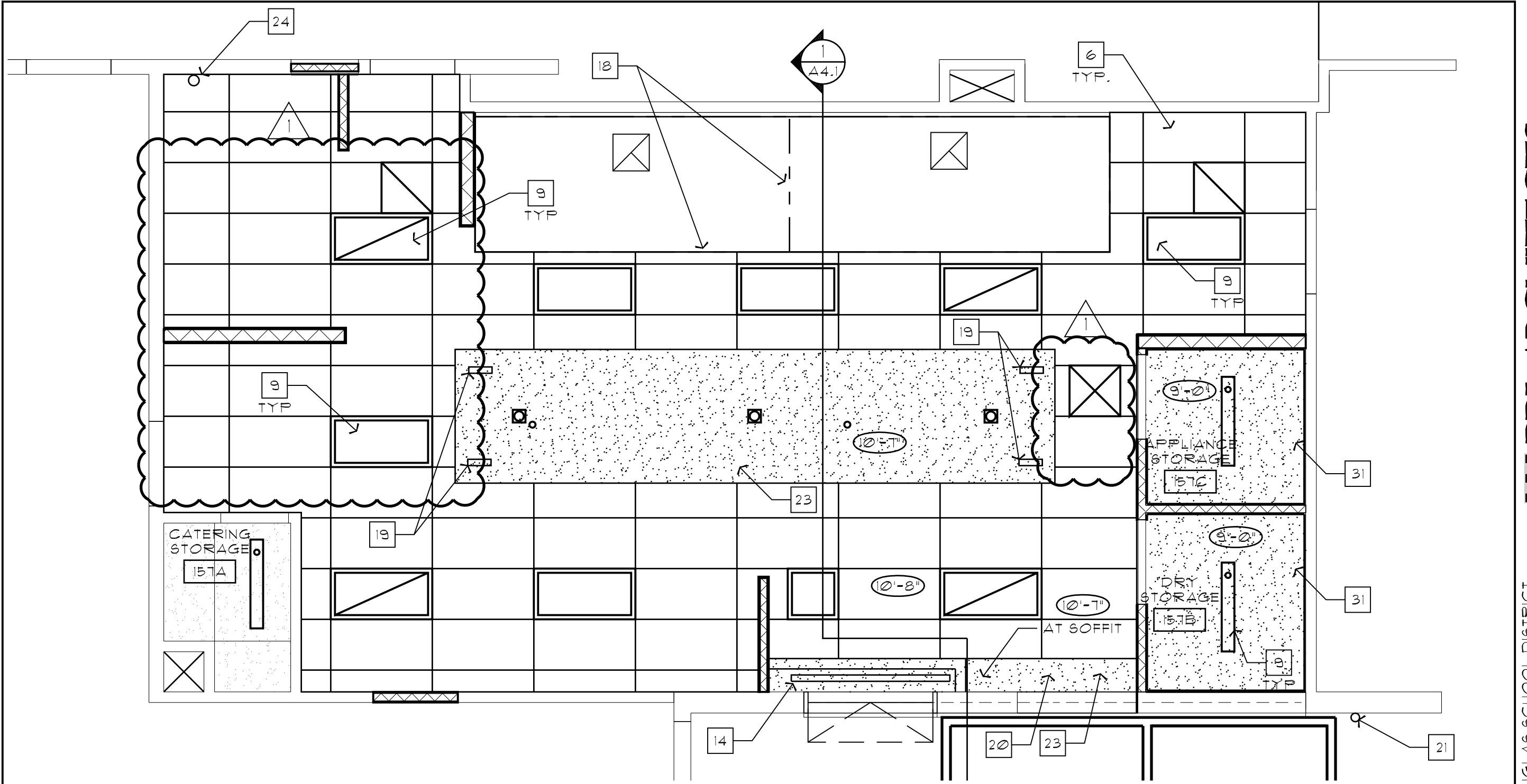
Drawing ARA-2, dated 7 MAR 2019

Drawing A4.1, Dated 7 MAR 2019

Drawing E1.2, dated 7 MAR 2019

Drawing E1.3, dated 7 MAR 2019

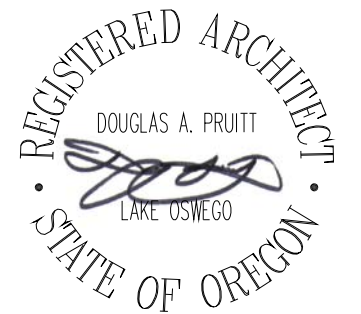
**END OF ADDENDUM TWO (2)**




2  
A1.1

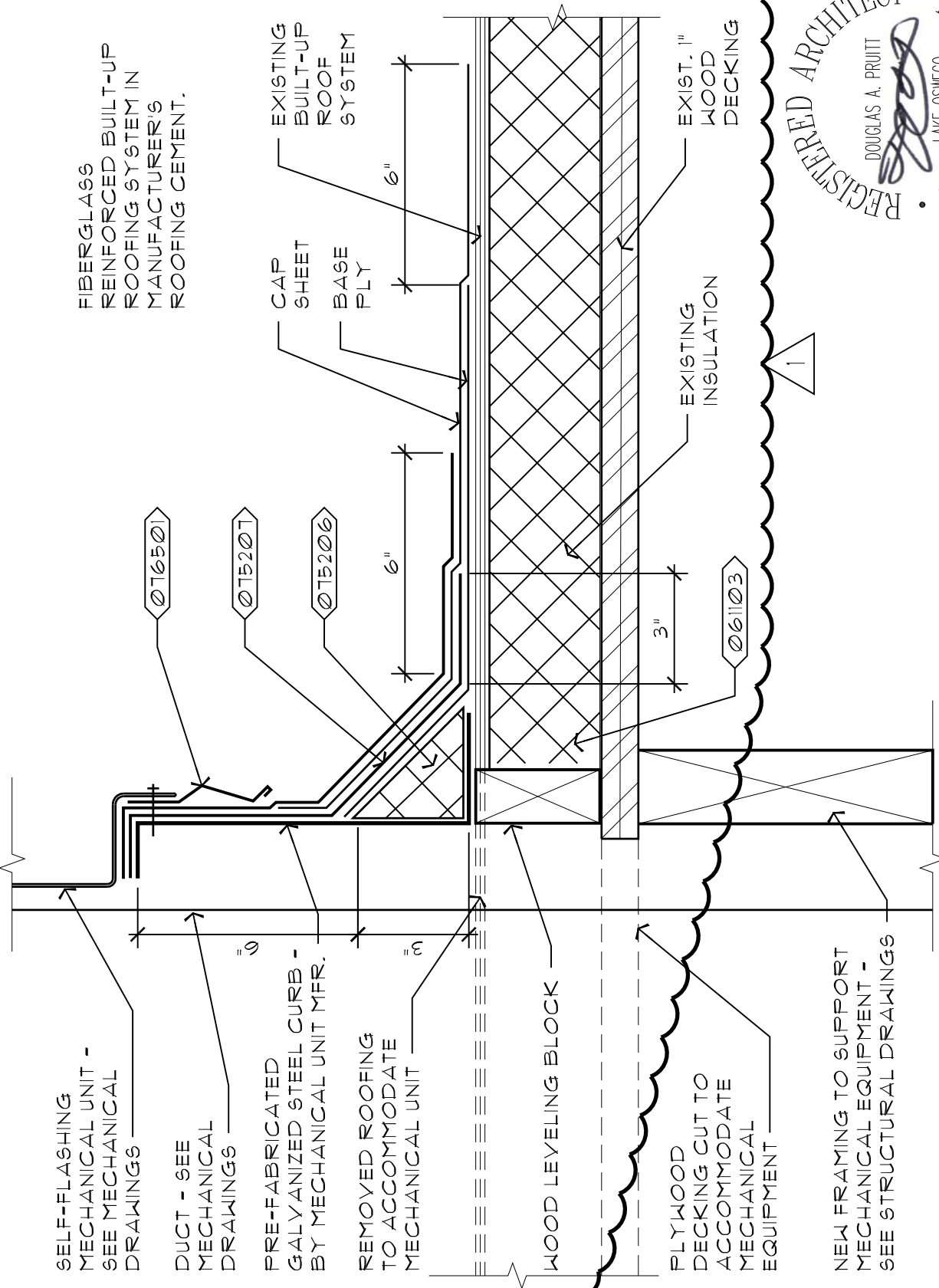
## PARTIAL REFLECTED CEILING PLAN

1/4" = 1'-0"





FIBERGLASS REINFORCED BUILT-UP ROOFING SYSTEM IN MANUFACTURER'S ROOFING CEMENT.



SELF-FLASHING MECHANICAL UNIT - SEE MECHANICAL DRAWINGS

DUCT - SEE MECHANICAL DRAWINGS

PRE-FABRICATED GALVANIZED STEEL CURB - BY MECHANICAL UNIT MFR.

REMOVED ROOFING TO ACCOMMODATE MECHANICAL UNIT

WOOD LEVELING BLOCK

PLYWOOD DECKING CUT TO ACCOMMODATE MECHANICAL EQUIPMENT

NEW FRAMING TO SUPPORT MECHANICAL EQUIPMENT - SEE STRUCTURAL DRAWINGS

**MECHANICAL CURB**

1  
A5.3  
3" = 1'-0"